



BPH

Centrifugal Plug Fans



Summary

Introduction	4
Main features	5
Product Description	6
Reference	7
OEM fan selection software	8
Models.....	9
BPH 225	10
BPH 250	12
BPH 280	14
BPH 315	16
BPH 355	18
BPH 400	20
BPH 450	22
BPH 500	24
BPH 560	26
BPH 630	28
BPH 710	30
BPH 800	32
BPH 900	34
BPH 1000	36
Accessories	39
Calibration chart	45
Installation instruction	47
ErP Data	49
Wheels moment of inertia	53



Introduction



BPH is the new series of Centrifugal Plug Fans from S&P.

This new Plug Fan improves even more the greatly extended product range from S&P.

Compared with its previous version, it achieves higher performance in terms of pressure & airflow, lower noise level and a higher efficiency degree, reaching top industry levels.

In order to meet market demands, S&P has created a vertical disposition version and included Permanent Magnet motors, to reach even higher efficiencies.

Extremely low maintenance is required thanks to its direct driven design.

Applications: Air Handling Units



Main features

- 2 different dispositions:



Horizontal **M** or Vertical **V**

- Anticorrosive version with stainless steel screws & epoxy painture available



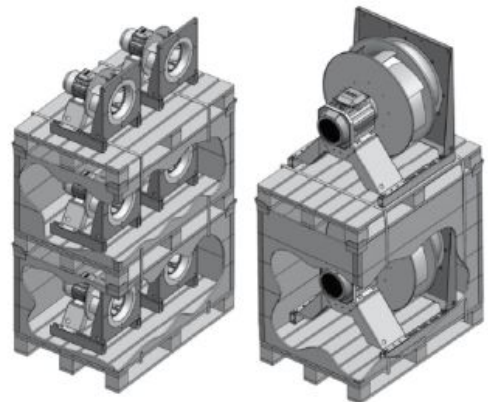
- Our motors are:



- Protection Rating:

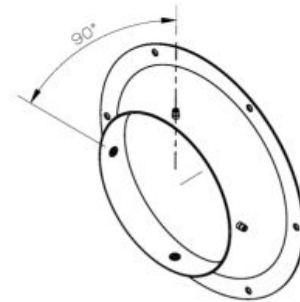


- Stackable Pallet



Optional for diameters up to 630 mm.

- Double pressure sensor tap as standard



- Multiple Electrical Supply Versions:

3kW or less	2/4V	230/400V	3 phase
4kW or more	4/6V	400/630V	3 phase

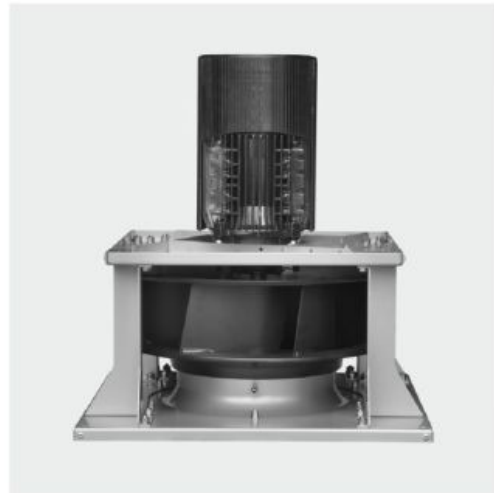
* 2/4V can be customized for motors of 4kW or more.



Product description



Horizontal Setup **M**



Vertical Setup **V**



IE2 Motor **AC**



Permanent Magnet Motor **PM**

IE3 Motors and Motors from other brands can be specified optionally.



BPH	M	280	2	T	01
1	2	3	4	5	6

1 Product range name

2 M: Horizontal Setup
V: Vertical Setup

3 Impeller Diameter in mm

4 2,4,6: Number of Poles of the Motor
PM: Permanent Magnet Motor

5 T: Three Phase

6 Motor Power

- 00 - 0.37 kW
- 01 - 0.55 kW
- 02 - 0.75 kW
- 03 - 1.1 kW
- 04 - 1.5 kW
- 05 - 2.2 kW
- 06 - 3 kW
- 07 - 4 kW
- 08 - 5.5 kW
- 09 - 7.5 kW
- 10 - 11 kW
- 11 - 15 kW
- 12 - 18.5 kW
- 13 - 22 kW
- 14 - 30 kW
- 15 - 37 kW

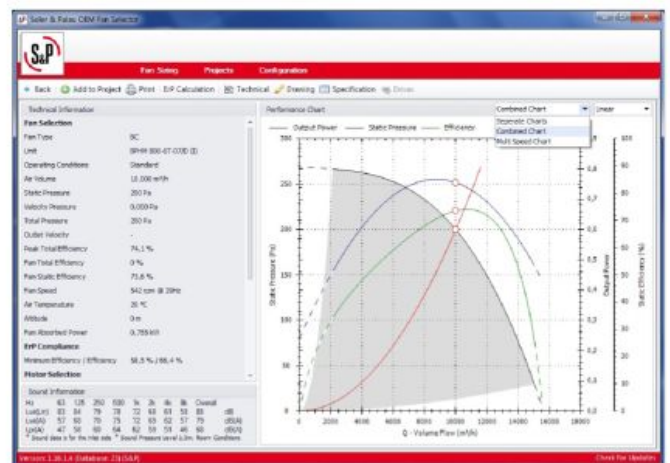
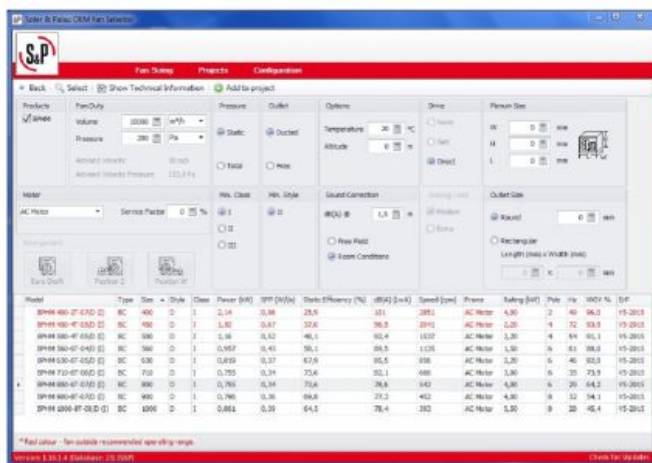
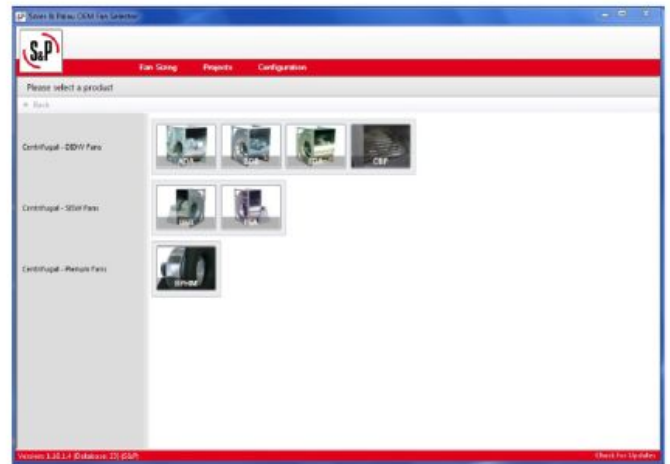


OEM fan selection software

We have updated our OEM fan selection software. You can ask for this software to your usual contact in S&P or download it directly from our website: www.solerpalau.com

Here you will be able to select most of S&P OEM fans.

In addition to this, our DLL Blackbox is now available, do not hesitate to contact us to access it.



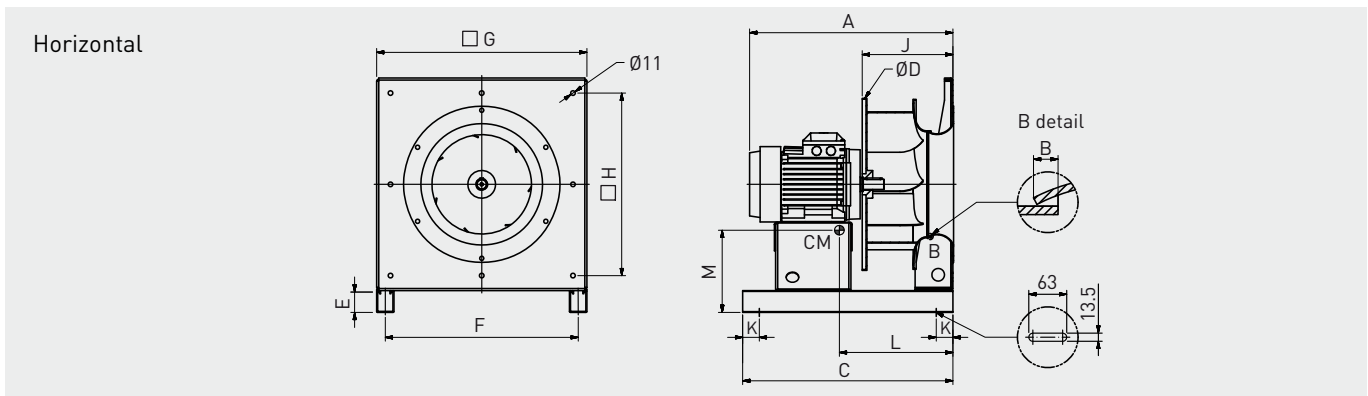
Data sheets

BPH 225

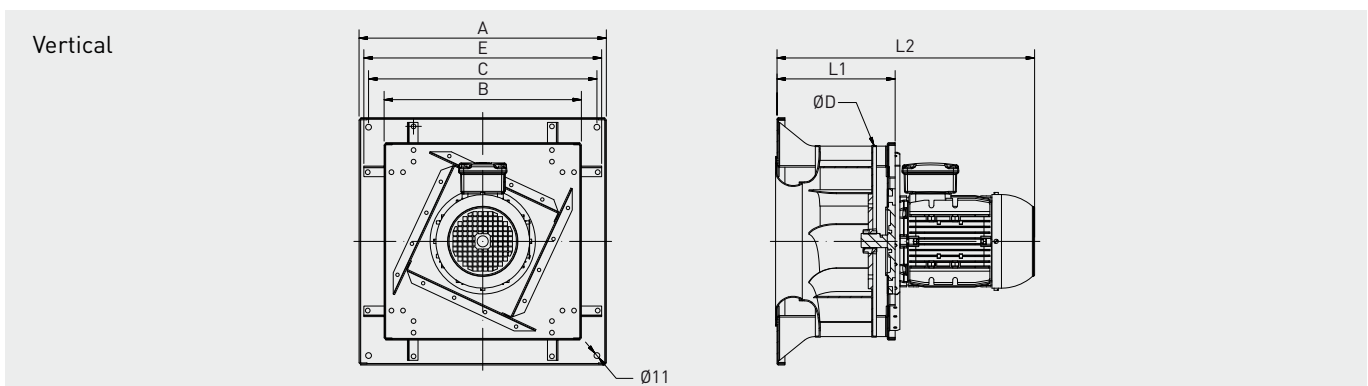
TECHNICAL CHARACTERISTICS

Fan type	Impeller Ø (mm)	Motor type	Motor power (kW)	Poles	Motor nominal rpm (1/rev)	IN (A)	Max BPH rpm (1/rev)	fmax (Hz)	Motor eff (%)
BPH 225-2T-00	225	AC	0,37	2	2800	0,98	3415	61	IE2
BPH 225-2T-01	225	AC	0,55	2	2800	1,36	3924	70	IE2
BPH 225-2T-02	225	AC	0,75	2	2848	1,86	4332	76	IE2
BPH 225-2T-03	225	AC	1,1	2	2846	2,52	4940	87	IE2
BPH 250-2T-04	225	AC	1,5	2	2852	3,17	5477	96	IE2
BPH 225-PM-02	225	PM	0,75	-	3600	1,6	3600	-	90,0%
BPH 225-PM-03	225	PM	1,1	-	4500	2,3	4500	-	90,0%

DIMENSIONS



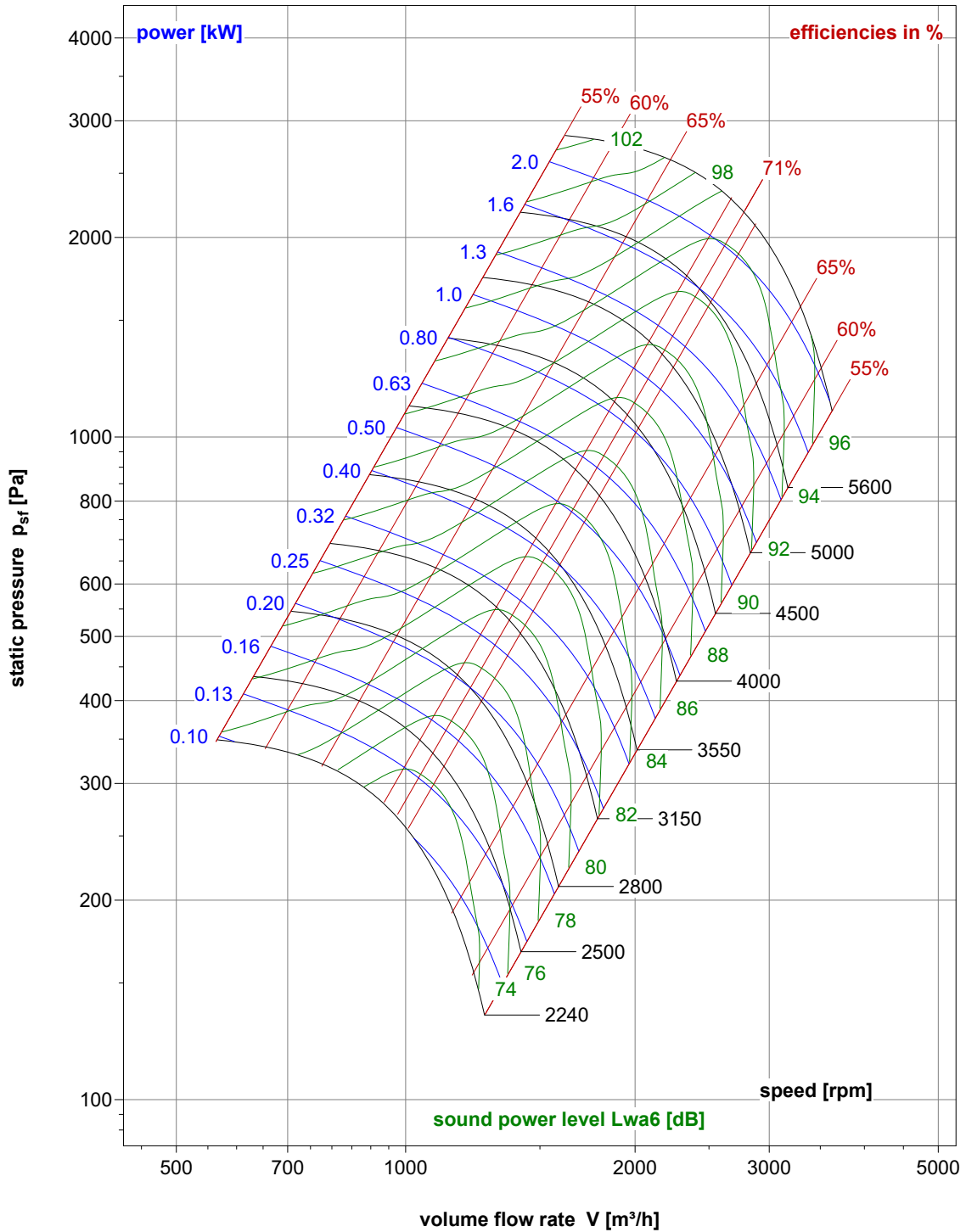
Fan type	A	B	C	D	E	F	G	H	I	J	K	L	M	Weight (kg)
BPHM 225-2T-00	362	2,3	400	256	52	359	400	352	-	123	50	165	191	22
BPHM 225-2T-01	362	2,3	400	256	52	359	400	352	-	123	50	169	193	24
BPHM 225-2T-02	425	2,3	400	256	52	359	400	352	-	123	50	186	205	26
BPHM 225-2T-03	425	2,3	400	256	52	359	400	352	-	123	50	187	205	28
BPHM 225-2T-04	453	2,3	400	256	52	359	400	352	-	123	50	207	212	31
BPHM 225-PM-02	357	2,3	400	256	52	359	400	352	-	123	50	158	182	19
BPHM 225-PM-03	357	2,3	400	256	52	359	400	352	-	123	50	158	182	19



Fan type	A	B	C	D	E	L1	L2	Weight (kg)
BPHV 225-2T-00	400	312	367	256	380	154	359	18
BPHV 225-2T-01	400	312	367	256	380	154	359	20
BPHV 225-2T-02	400	312	367	256	380	160,5	428,5	23
BPHV 225-2T-03	400	312	367	256	380	160,5	428,5	24
BPHV 225-2T-04	400	312	367	256	380	160,5	454,5	28
BPHV 225-PM-02	400	312	367	256	380	160,5	352,5	15
BPHV 225-PM-03	400	312	367	256	380	160,5	352,5	15

BPH 225

WHEEL PERFORMANCE CURVE



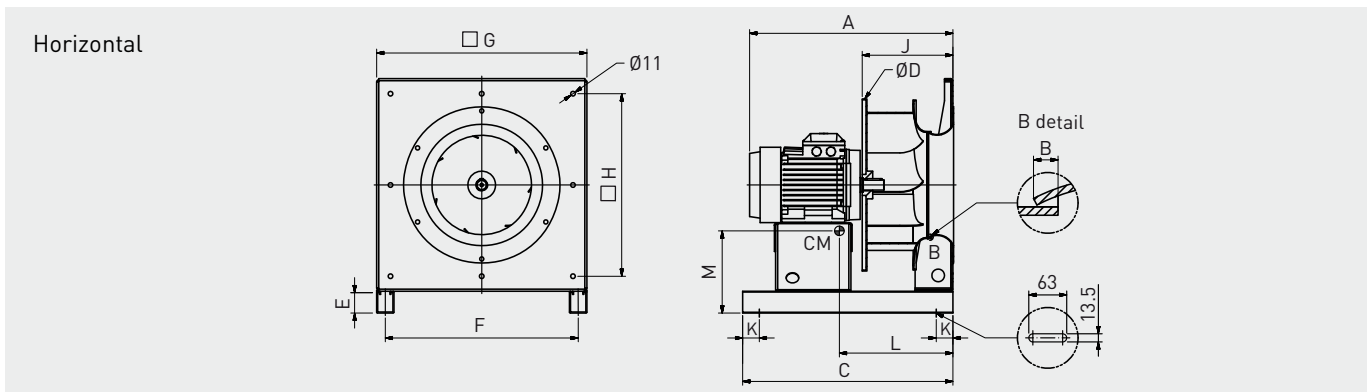
FAN SIZE		"K" factor correction for spectrum noise of BPH							
		Octave band (Hz)							
		63	125	250	500	1K	2K	4K	8K
BPH 225	inlet	-12	-10	-6	-7	-9	-12	-17	-22
	outlet	-10	-8	-4	-5	-7	-10	-13	-18

BPH 250

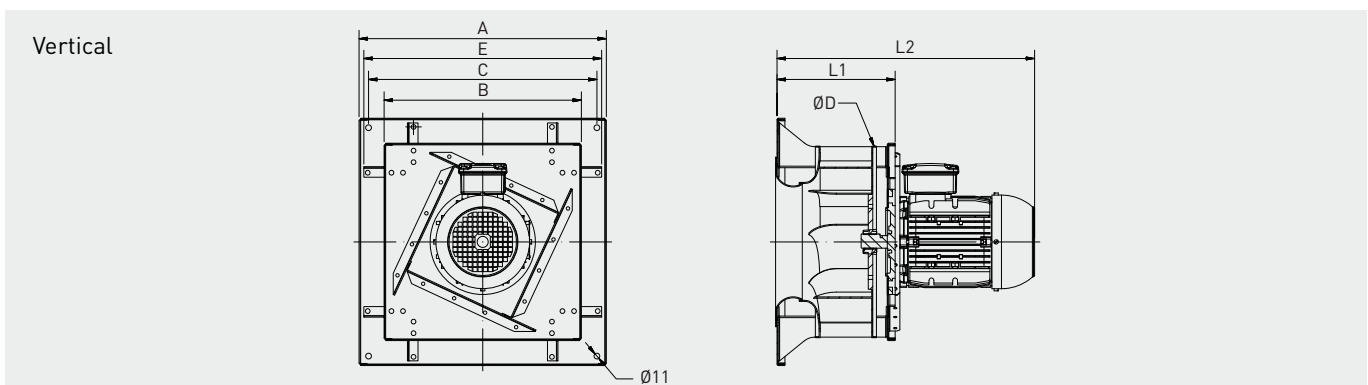
TECHNICAL CHARACTERISTICS

Fan type	Impeller Ø (mm)	Motor type	Motor power (kW)	Poles	Motor nominal rpm (1/rev)	IN (A)	Max BPH rpm (1/rev)	fmax (Hz)	Motor eff (%)
BPH 250-2T-00	250	AC	0,37	2	2800	0,98	2920	52	IE2
BPH 250-2T-01	250	AC	0,55	2	2800	1,36	3360	60	IE2
BPH 250-2T-02	250	AC	0,75	2	2855	1,73	3720	65	IE2
BPH 250-2T-03	250	AC	1,1	2	2845	2,4	4270	75	IE2
BPH 250-2T-04	250	AC	1,5	2	2860	3,25	4750	83	IE2
BPH 250-2T-05	250	AC	2,2	2	2880	4,55	5410	94	IE2
BPH 250-PM-02	250	PM	0,75	-	3600	1,6	3600	-	90,0%
BPH 250-PM-04	250	PM	1,5	-	4500	3,2	4500	-	91,0%

DIMENSIONS



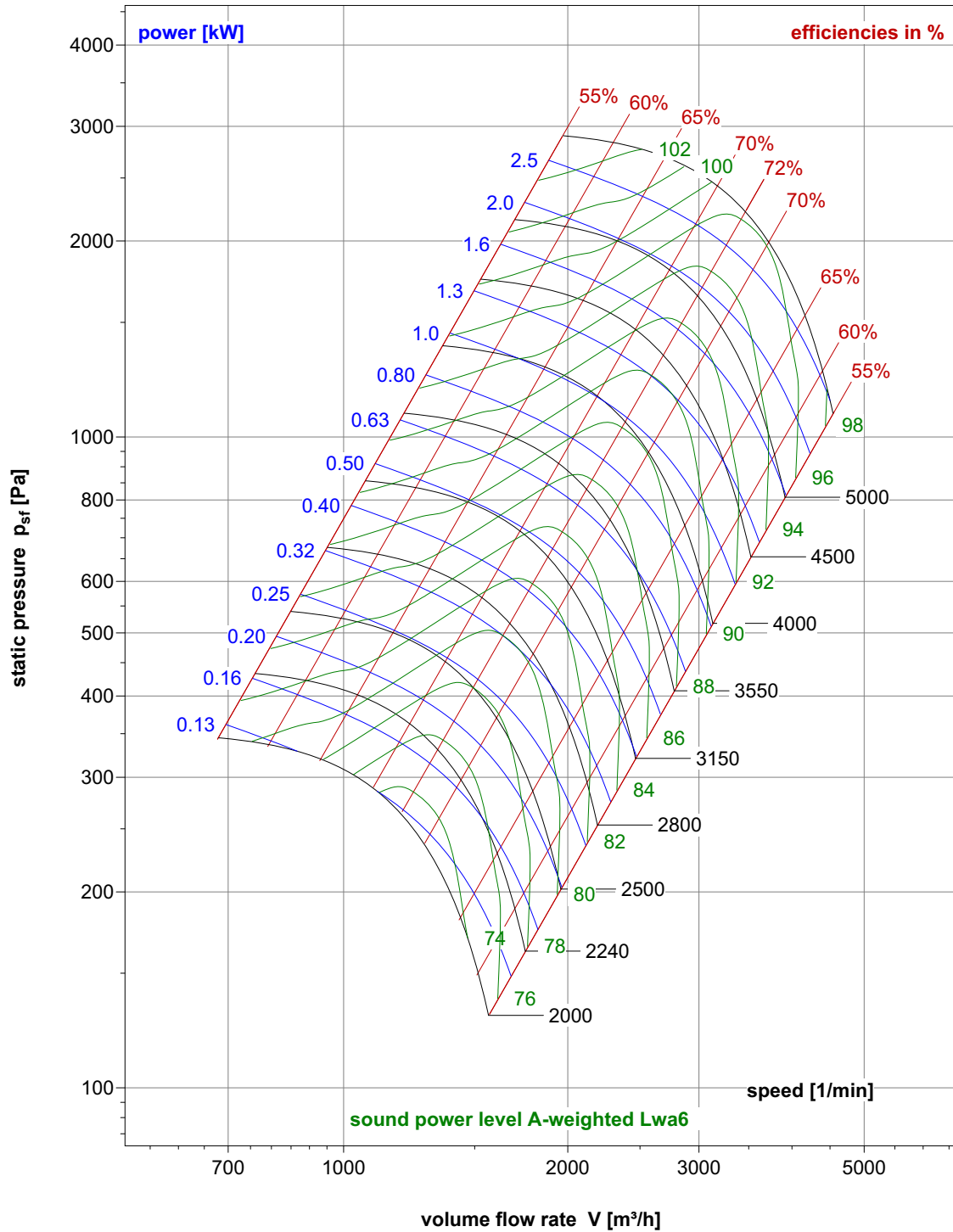
Fan type	A	B	C	D	E	F	G	H	I	J	K	L	M	Weight (kg)
BPHM 250-2T-00	377	2,5	400	284	52	359	400	352	-	138	50	176	194	22
BPHM 250-2T-01	377	2,5	400	284	52	359	400	352	-	138	50	179	196	24
BPHM 250-2T-02	440	2,5	400	284	52	359	400	352	-	138	50	198	207	26
BPHM 250-2T-03	440	2,5	400	284	52	359	400	352	-	138	50	198	207	28
BPHM 250-2T-04	468	2,5	400	284	52	359	400	352	-	138	50	219	214	31
BPHM 250-2T-05	468	2,5	400	284	52	359	400	352	-	138	50	222	215	35
BPHM 250-PM-02	372	2,5	400	284	52	359	400	352	-	138	50	168	185	19
BPHM 250-PM-04	372	2,5	400	284	52	359	400	352	-	138	50	175	193	19



Fan type	A	B	C	D	E	L1	L2	Weight (kg)
BPHV 250-2T-00	400	312	367	284	380	170	375	19
BPHV 250-2T-01	400	312	367	284	380	170	375	21
BPHV 250-2T-02	400	312	367	284	380	175,5	443,5	23
BPHV 250-2T-03	400	312	367	284	380	175,5	443,5	24
BPHV 250-2T-04	400	312	367	284	380	175,5	469,5	28
BPHV 250-2T-05	400	312	367	284	380	175,5	469,5	31
BPHV 250-PM-02	400	312	367	284	380	175,5	367,5	15
BPHV 250-PM-04	400	312	367	284	380	175,5	367,5	16

BPH 250

WHEEL PERFORMANCE CURVE



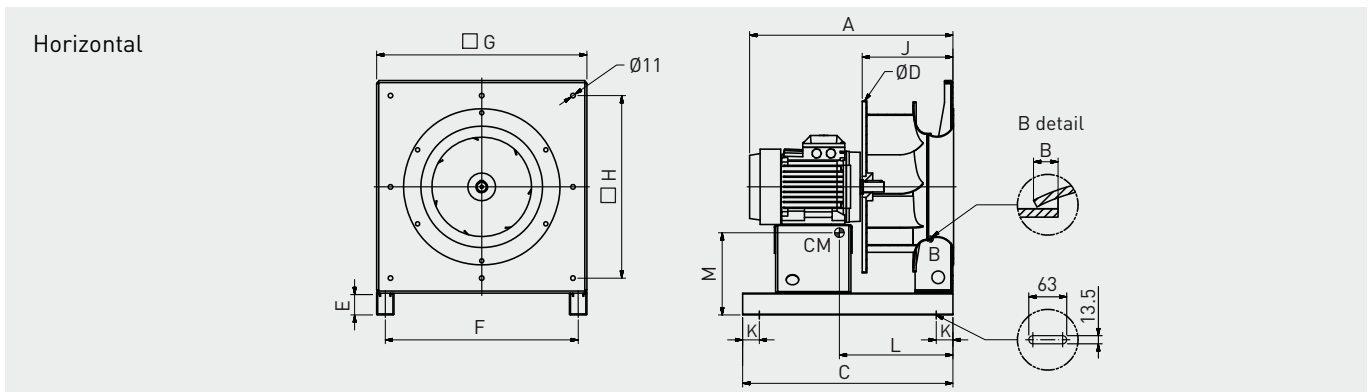
FAN SIZE		"K" factor correction for spectrum noise of BPH							
		Octave band (Hz)							
		63	125	250	500	1K	2K	4K	8K
BPH 250	inlet	-12	-10	-6	-7	-9	-12	-17	-22
	outlet	-10	-8	-4	-5	-7	-10	-13	-18

BPH 280

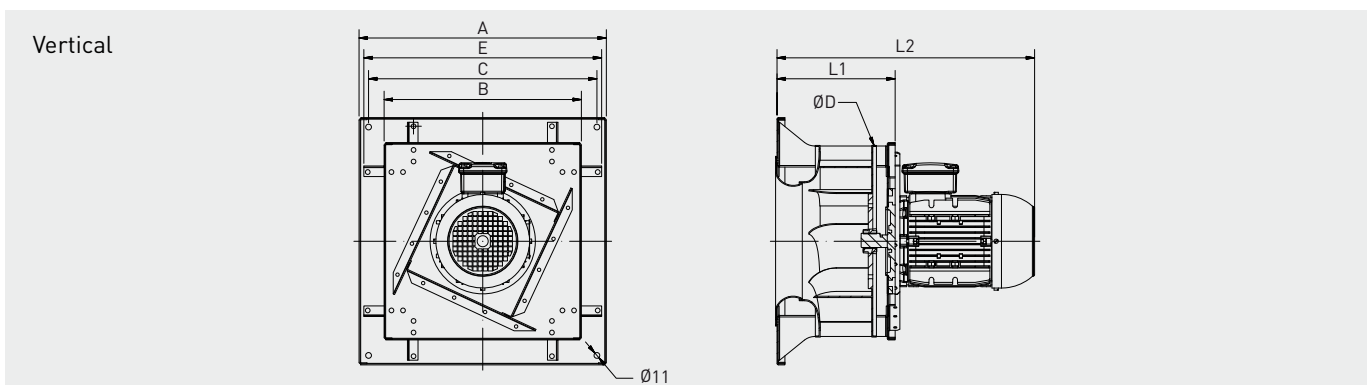
TECHNICAL CHARACTERISTICS

Fan type	Impeller Ø (mm)	Motor type	Motor power (kW)	Poles	Motor nominal rpm (1/rev)	IN (A)	Max BPH rpm (1/rev)	fmax (Hz)	Motor eff (%)
BPH 280-2T-01	280	AC	0,55	2	2800	1,36	2800	50	IE2
BPH 280-2T-02	280	AC	0,75	2	2855	1,73	3140	55	IE2
BPH 280-2T-03	280	AC	1,1	2	2845	2,4	3530	62	IE2
BPH 280-2T-04	280	AC	1,5	2	2860	3,25	3950	69	IE2
BPH 280-2T-05	280	AC	2,2	2	2880	4,55	4500	78	IE2
BPH 280-2T-06	280	AC	3	2	2890	6,1	4910	85	IE2
BPH 280-PM-02	280	PM	0,75	-	3600	1,6	3040	-	90,0%
BPH 280-PM-05	280	PM	2,2	-	4500	4,7	4350	-	91,8%

DIMENSIONS



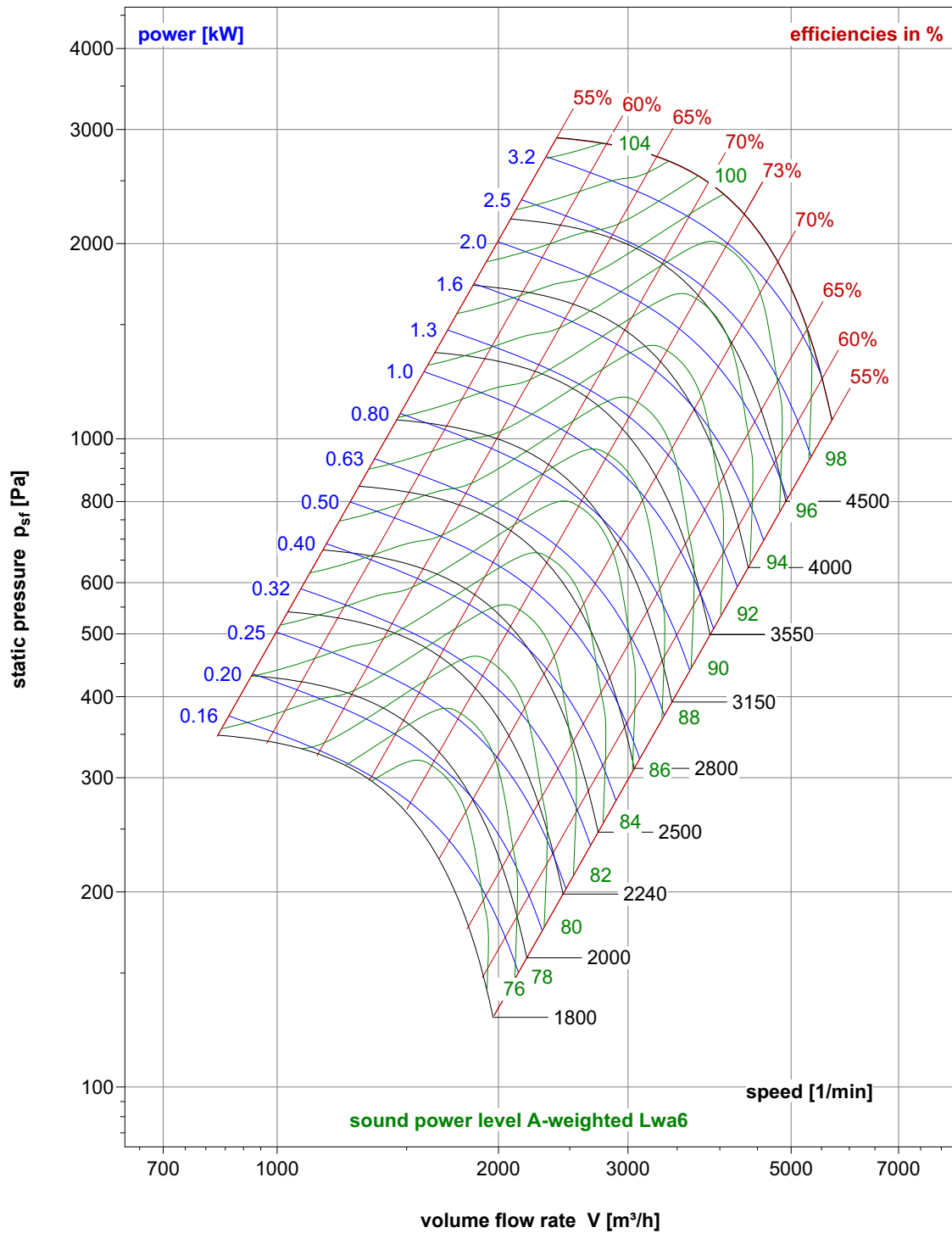
Fan type	A	B	C	D	E	F	G	H	I	J	K	L	M	Weight (kg)
BPHM 280-2T-01	393	2,8	400	319	52	359	400	352	-	162	50	187	201	25
BPHM 280-2T-02	456	2,8	400	319	52	359	400	352	-	162	50	198	203	28
BPHM 280-2T-03	456	2,8	400	319	52	359	400	352	-	162	50	202	207	29
BPHM 280-2T-04	484	2,8	400	319	52	359	400	352	-	162	50	220	210	33
BPHM 280-2T-05	484	2,8	400	319	52	359	400	352	-	162	50	231	218	36
BPHM 280-2T-06	506	2,8	500	319	52	359	400	352	-	162	50	255	219	44
BPHM 280-PM-02	388	2,8	400	319	52	359	400	352	-	162	50	174	192	20
BPHM 280-PM-05	388	2,8	400	319	52	359	400	352	-	162	50	184	199	21



Fan type	A	B	C	D	E	L1	L2	Weight (kg)
BPHV 280-2T-01	420	345	390	319	408	186	391	23
BPHV 280-2T-02	420	345	390	319	408	191	459	25
BPHV 280-2T-03	420	345	390	319	408	191	459	26
BPHV 280-2T-04	420	345	390	319	408	197	491	30
BPHV 280-2T-05	420	345	390	319	408	197	491	33
BPHV 280-2T-06	420	345	390	319	408	197	512	41
BPHV 280-PM-02	420	345	390	319	408	191	383	17
BPHV 280-PM-05	420	345	390	319	408	191	383	19

BPH 280

WHEEL PERFORMANCE CURVE



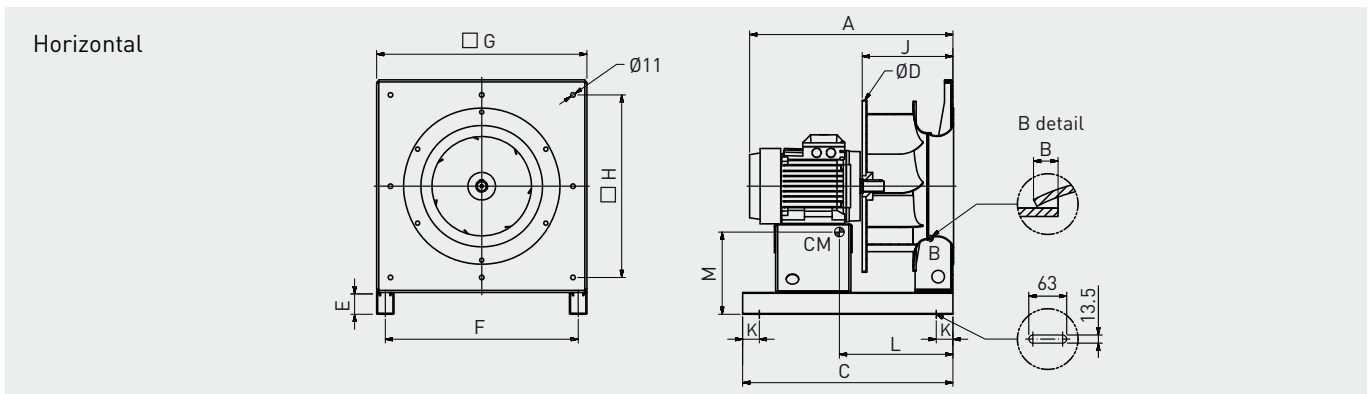
FAN SIZE		"K" factor correction for spectrum noise of BPH							
		Octave band (Hz)							
		63	125	250	500	1K	2K	4K	8K
BPH 280	inlet	-4	-5	-2	-5	-8	-11	-15	-20
	outlet	-2	-3	0	-3	-4	-8	-11	-16

BPH 315

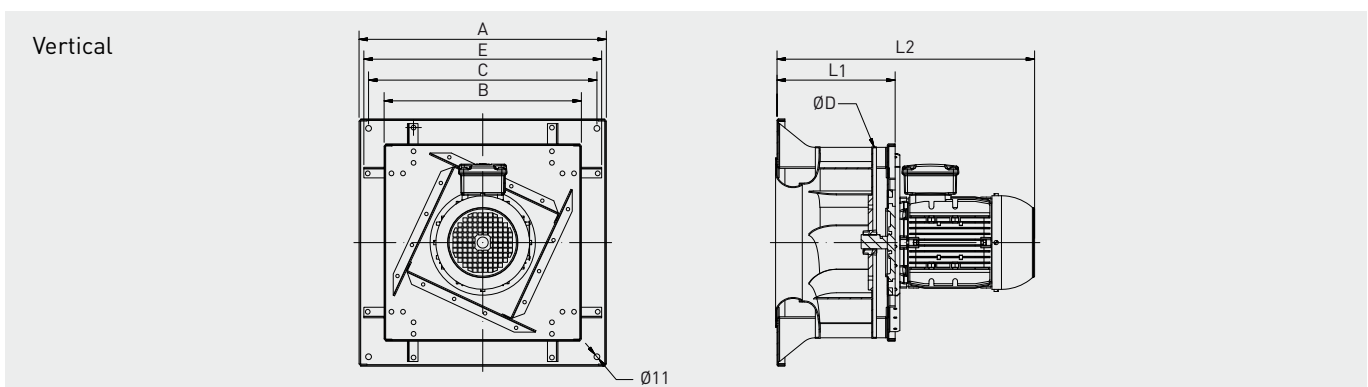
TECHNICAL CHARACTERISTICS

Fan type	Impeller Ø (mm)	Motor type	Motor power (kW)	Poles	Motor nominal rpm (1/rev)	IN (A)	Max BPH rpm (1/rev)	fmax (Hz)	Motor eff (%)
BPH 315-2T-03	315	AC	1,1	2	2845	2,4	2960	52	IE2
BPH 315-2T-04	315	AC	1,5	2	2860	3,25	3260	57	IE2
BPH 315-2T-05	315	AC	2,2	2	2880	4,55	3690	64	IE2
BPH 315-2T-06	315	AC	3	2	2890	6,1	4100	71	IE2
BPH 315-2T-07	315	AC	4	2	2905	7,8	4300	74	IE2
BPH 315-PM-03	315	PM	1,1	-	3600	2,3	2850	-	90,9%
BPH 315-PM-05	315	PM	2,2	-	3600	4,6	3595	-	91,8%
BPH 315-PM-06	315	PM	3	-	4500	6,4	4100	-	91,9%

DIMENSIONS



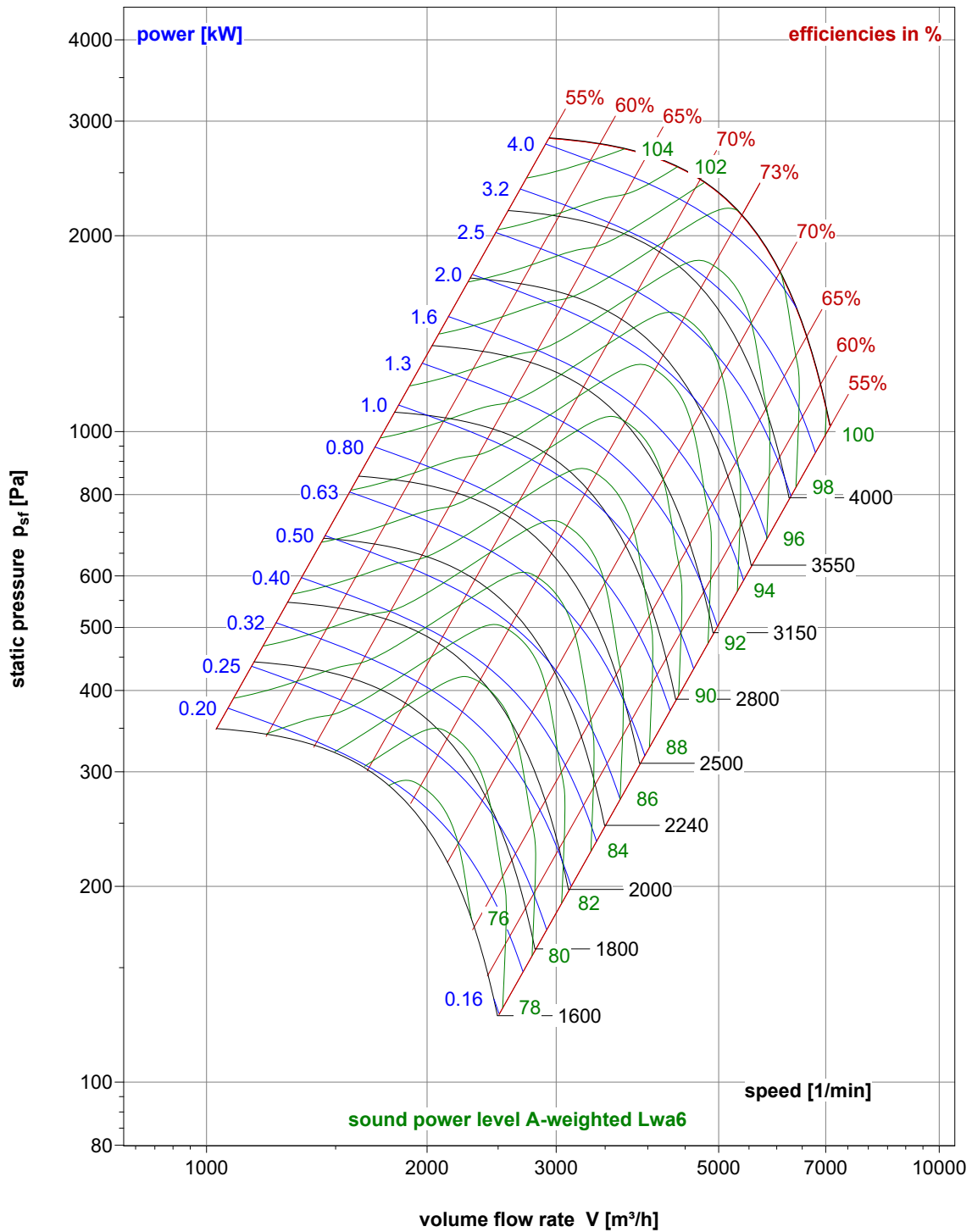
Fan type	A	B	C	D	E	F	G	H	I	J	K	L	M	Weight (kg)
BPHM 315-2T-03	476	3,2	500	360	52	359	400	364	-	181	50	223	207	30
BPHM 315-2T-04	504	3,2	500	360	52	359	400	364	-	181	50	240	211	34
BPHM 315-2T-05	504	3,2	500	360	52	359	400	364	-	181	50	248	214	37
BPHM 315-2T-06	526	3,2	500	360	52	359	400	364	-	181	50	267	219	45
BPHM 315-2T-07	543	3,2	500	360	52	359	400	364	-	181	50	284	226	54
BPHM 315-PM-03	408	3,2	400	360	52	359	400	364	-	181	50	196	191	22
BPHM 315-PM-05	408	3,2	400	360	52	359	400	364	-	181	50	202	196	23
BPHM 315-PM-06	408	3,2	400	360	52	359	400	364	-	181	50	207	201	23



Fan type	A	B	C	D	E	L1	L2	Weight (kg)
BPHV 315-2T-03	470	375	434	360	453	211	479	29
BPHV 315-2T-04	470	375	434	360	453	219	513	32
BPHV 315-2T-05	470	375	434	360	453	219	513	36
BPHV 315-2T-06	470	375	434	360	453	219	534	43
BPHV 315-2T-07	470	375	434	360	453	219	551	53
BPHV 315-PM-03	470	375	434	360	453	211	403	20
BPHV 315-PM-05	470	375	434	360	453	211	403	22
BPHV 315-PM-06	470	375	434	360	453	211	403	22

BPH 315

WHEEL PERFORMANCE CURVE



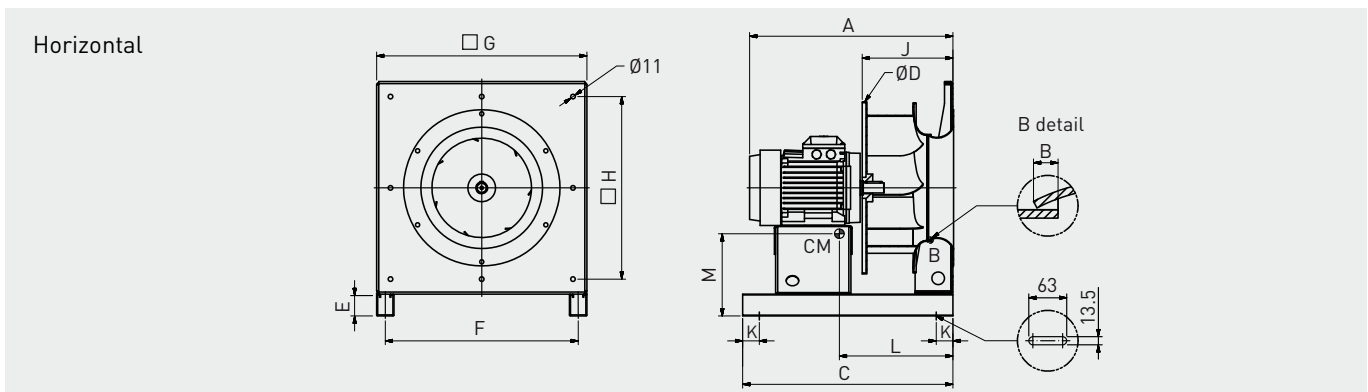
FAN SIZE		"K" factor correction for spectrum noise of BPH							
		Octave band (Hz)							
		63	125	250	500	1K	2K	4K	8K
BPH 315	inlet	-4	-5	-2	-5	-8	-11	-15	-20
	outlet	-2	-3	0	-3	-4	-8	-11	-16

BPH 355

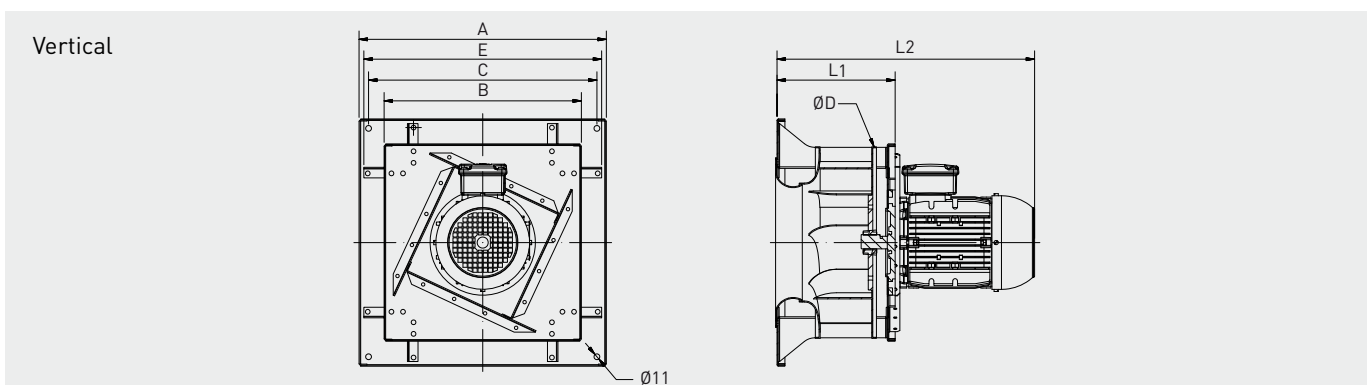
TECHNICAL CHARACTERISTICS

Fan type	Impeller Ø (mm)	Motor type	Motor power (kW)	Poles	Motor nominal rpm (1/rev)	IN (A)	Max BPH rpm (1/rev)	fmax (Hz)	Motor eff (%)
BPH 355-4T-03	355	AC	1,1	4	1415	2,55	2380	84	IE2
BPH 355-4T-04	355	AC	1,5	4	1420	3,4	2610	92	IE2
BPH 355-2T-05	355	AC	2,2	2	2880	4,55	3000	52	IE2
BPH 355-2T-06	355	AC	3	2	2890	6,1	3300	57	IE2
BPH 355-2T-07	355	AC	4	2	2905	7,8	3600	62	IE2
BPH 355-PM-03	355	PM	1,1	-	3000	2,3	2377	-	90,5%
BPH 355-PM-05	355	PM	2,2	-	3000	4,7	2995	-	91,4%
BPH 355-PM-07	355	PM	4	-	3600	8,4	3600	-	92,8%

DIMENSIONS



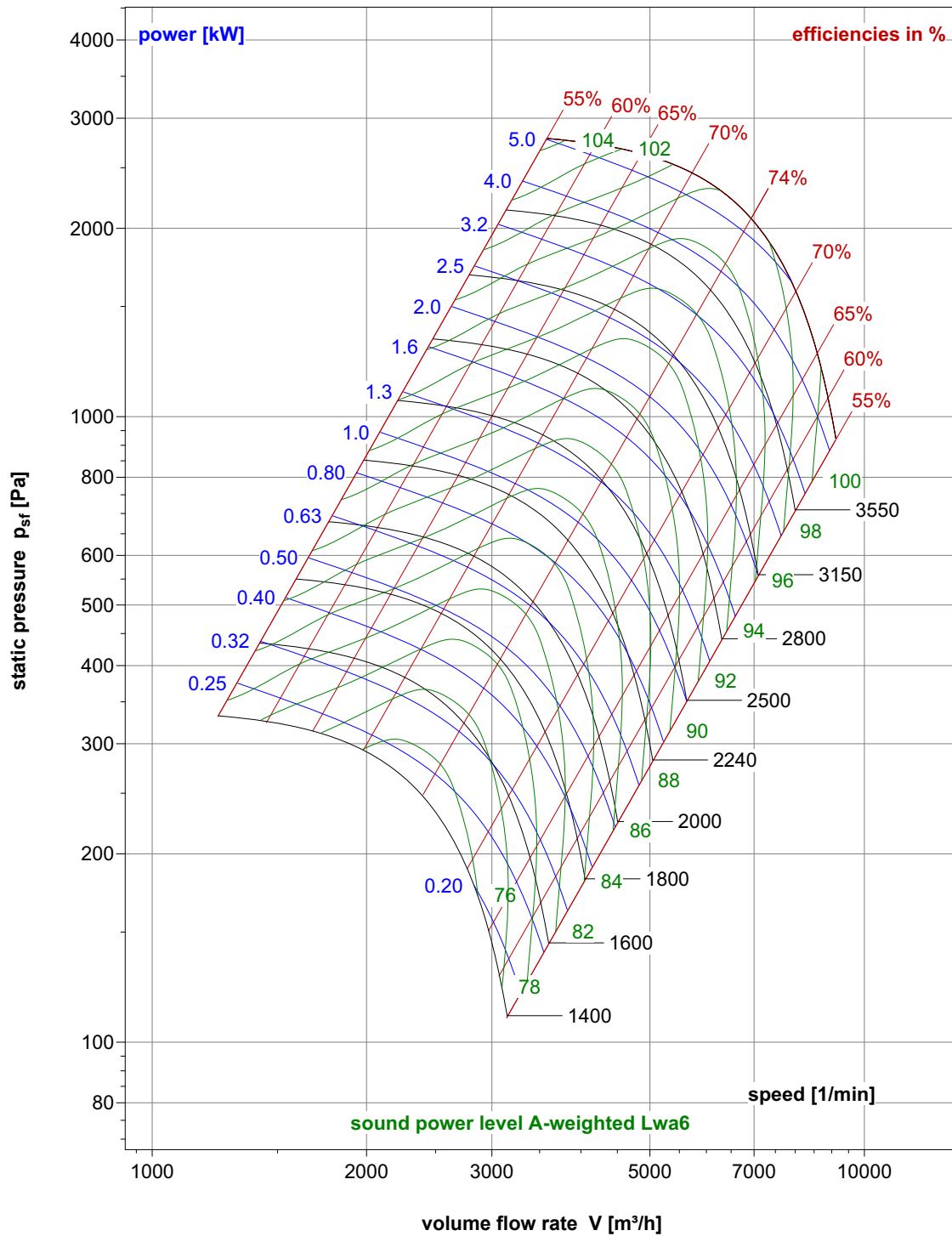
Fan type	A	B	C	D	E	F	G	H	I	J	K	L	M	Weight (kg)
BPHM 355-4T-03	527	3,6	500	404	52	459	500	434	-	205	50	249	251	46
BPHM 355-4T-04	527	3,6	500	404	52	459	500	434	-	205	50	250	251	45
BPHM 355-2T-05	527	3,6	500	404	52	459	500	434	-	205	50	249	251	44
BPHM 355-2T-06	549	3,6	500	404	52	459	500	434	-	205	50	272	259	51
BPHM 355-2T-07	566	3,6	500	404	52	459	500	434	-	205	50	288	265	61
BPHM 355-PM-03	431	3,6	500	404	52	459	500	434	-	205	50	202	230	28
BPHM 355-PM-05	431	3,6	500	404	52	459	500	434	-	205	50	208	235	29
BPHM 355-PM-07	483	3,6	500	404	52	459	500	434	-	205	50	237	243	37



Fan type	A	B	C	D	E	L1	L2	Weight (kg)
BPHV 355-4T-03	500	415	470	404	486	240,5	530	43
BPHV 355-4T-04	500	415	470	404	486	240,5	530	42
BPHV 355-2T-05	500	415	470	404	486	240,5	530	41
BPHV 355-2T-06	500	415	470	404	486	247,5	558	48
BPHV 355-2T-07	500	415	470	404	486	247,5	575	58
BPHV 355-PM-03	500	415	470	404	486	238,5	426	26
BPHV 355-PM-05	500	415	470	404	486	238,5	426	27
BPHV 355-PM-07	500	415	470	404	486	240,5	490	34

BPH 355

WHEEL PERFORMANCE CURVE



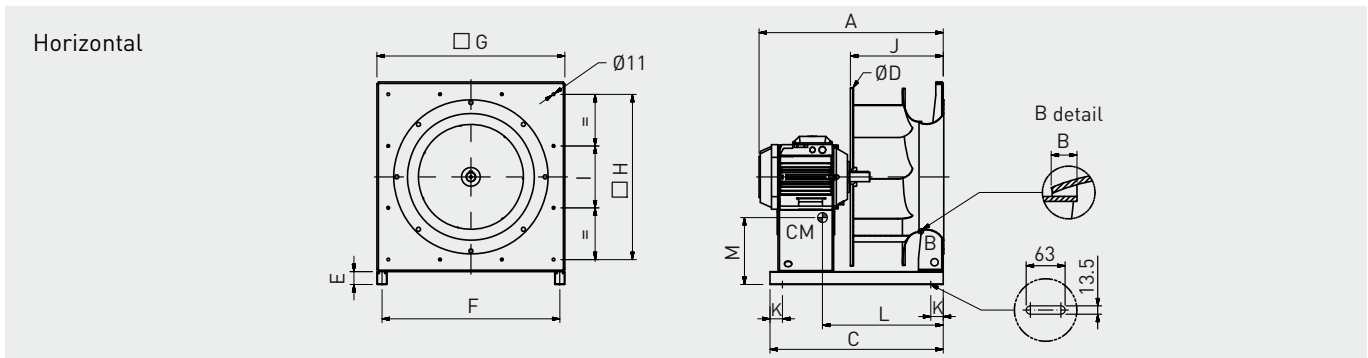
FAN SIZE		"K" factor correction for spectrum noise of BPH							
		Octave band (Hz)							
		63	125	250	500	1K	2K	4K	8K
BPH 355	inlet	-4	-5	-2	-5	-8	-11	-15	-20
	outlet	-2	-3	0	-3	-4	-8	-11	-16

BPH 400

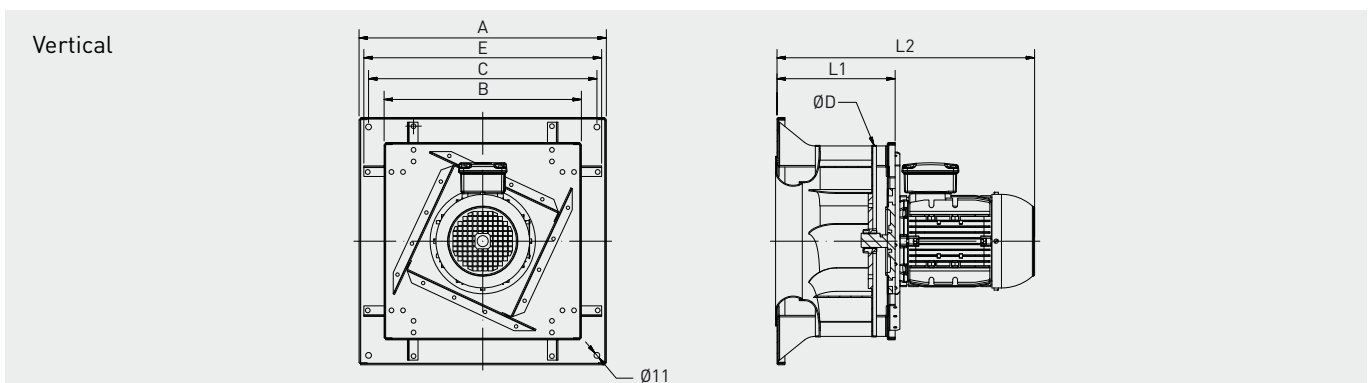
TECHNICAL CHARACTERISTICS

Fan type	Impeller Ø (mm)	Motor type	Motor power (kW)	Poles	Motor nominal rpm (1/rev)	IN (A)	Max BPH rpm (1/rev)	fmax (Hz)	Motor eff (%)
BPH 400-4T-03	400	AC	1,1	4	1415	2,55	1925	68	IE2
BPH 400-4T-04	400	AC	1,5	4	1420	3,4	2160	76	IE2
BPH 400-4T-05	400	AC	2,2	4	1420	4,7	2470	87	IE2
BPH 400-4T-06	400	AC	3	4	1420	6,4	2730	96	IE2
BPH 400-2T-07	400	AC	4	2	2905	7,8	2970	51	IE2
BPH 400-2T-08	400	AC	5,5	2	2905	7,8	3320	57	IE2
BPH 400-PM-05	400	PM	2,2	-	3000	4,7	2435	-	91,4%
BPH 400-PM-07	400	PM	4	-	3000	8,5	3000	-	92,6%

DIMENSIONS



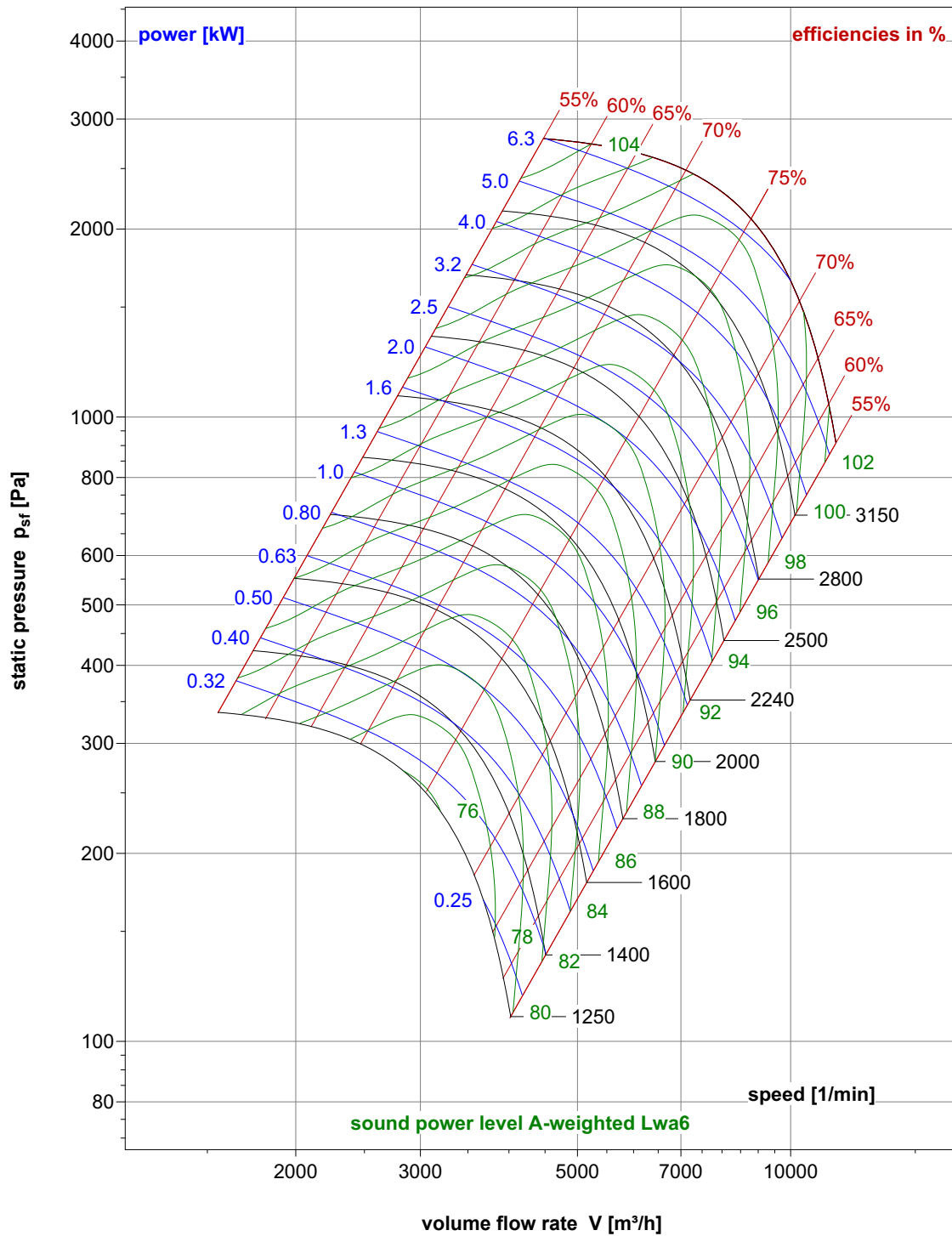
Fan type	A	B	C	D	E	F	G	H	I	J	K	L	M	Weight (kg)
BPHM 400-4T-03	550	4	500	455	52	459	500	464	164	228	50	262	254	47
BPHM 400-4T-04	550	4	500	455	52	459	500	464	164	228	50	267	258	46
BPHM 400-4T-05	572	4	500	455	52	459	500	464	164	228	50	290	263	58
BPHM 400-4T-06	572	4	500	455	52	459	500	464	164	228	50	292	264	58
BPHM 400-2T-07	589	4	600	455	52	459	500	464	164	228	50	304	262	63
BPHM 400-2T-08	589	4	600	455	52	459	500	464	164	228	50	308	264	67
BPHM 400-PM-05	454	4	500	455	52	459	500	464	164	228	50	216	237	31
BPHM 400-PM-07	506	4	500	455	52	459	500	464	164	228	50	253	251	38



Fan type	A	B	C	D	E	L1	L2	Weight (kg)
BPHV 400-4T-03	550	460	519	455	536	263	552,5	47
BPHV 400-4T-04	550	460	519	455	536	263	552,5	46
BPHV 400-4T-05	550	460	519	455	536	277,5	588	58
BPHV 400-4T-06	550	460	519	455	536	277,5	588	58
BPHV 400-2T-07	550	460	519	455	536	277,5	605	62
BPHV 400-2T-08	550	460	519	455	536	277,5	605	66
BPHV 400-PM-05	550	460	519	455	536	261,5	449	31
BPHV 400-PM-07	550	460	519	455	536	263	512,5	38

BPH 400

WHEEL PERFORMANCE CURVE



FAN SIZE		"K" factor correction for spectrum noise of BPH							
		Octave band (Hz)							
		63	125	250	500	1K	2K	4K	8K
BPH 400	inlet	-6	-5	-3	-4	-8	-11	-15	-20
	outlet	-3	-2	-1	-2	-4	-8	-11	-16

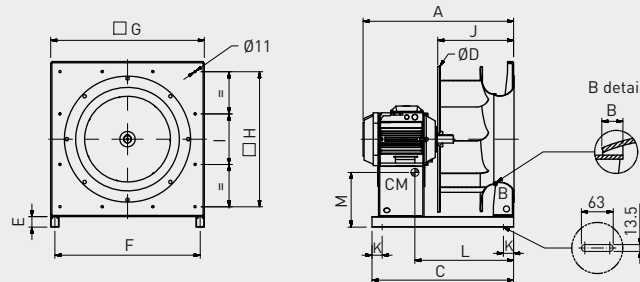
BPH 450

TECHNICAL CHARACTERISTICS

Fan type	Impeller Ø (mm)	Motor type	Motor power (kW)	Poles	Motor nominal rpm (1/rev)	IN (A)	Max BPH rpm (1/rev)	fmax (Hz)	Motor eff [%]
BPH 450-4T-03	450	AC	1,1	4	1415	2,55	1615	57	IE2
BPH 450-4T-04	450	AC	1,5	4	1420	3,4	1760	62	IE2
BPH 450-4T-05	450	AC	2,2	4	1420	4,7	2045	72	IE2
BPH 450-4T-06	450	AC	3	4	1420	6,4	2245	79	IE2
BPH 450-4T-07	450	AC	4	4	1440	8,2	2480	86	IE2
BPH 450-4T-08	450	AC	5,5	4	1455	11,4	2740	94	IE2
BPH 450-2T-09	450	AC	7,5	2	2930	13,8	2980	51	IE2
BPH 450-PM-05	450	PM	2,2	-	3000	4,7	2025	-	91,4%
BPH 450-PM-07	450	PM	4	-	3000	8,5	2470	-	92,6%
BPH 450-PM-08	450	PM	5,5	-	3000	11,7	2745	-	93,1%
BPH 450-PM-09	450	PM	7,5	-	3000	15,9	3000	-	93,7%

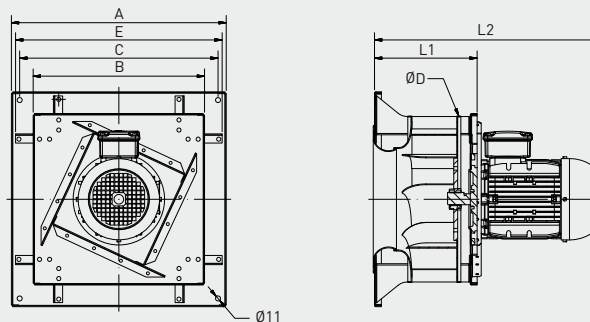
DIMENSIONS

Horizontal



Fan type	A	B	C	D	E	F	G	H	I	J	K	L	M	Weight (kg)
BPHM 450-4T-03	579	4,5	600	505	52	589	630	536	200	256	50	275	299	62
BPHM 450-4T-04	579	4,5	600	505	52	589	630	536	200	256	50	277	299	61
BPHM 450-4T-05	601	4,5	600	505	52	589	630	536	200	256	50	300	309	73
BPHM 450-4T-06	601	4,5	600	505	52	589	630	536	200	256	50	302	310	73
BPHM 450-4T-07	618	4,5	600	505	52	589	630	536	200	256	50	317	315	82
BPHM 450-4T-08	728	4,5	700	505	52	589	630	536	200	256	50	350	323	106
BPHM 450-2T-09	728	4,5	700	505	52	589	630	536	200	256	50	349	323	102
BPHM 450-PM-05	483	4,5	600	505	52	589	630	536	200	256	50	239	277	47
BPHM 450-PM-07	535	4,5	600	505	52	589	630	536	200	256	50	265	292	53
BPHM 450-PM-08	535	4,5	600	505	52	589	630	536	200	256	50	269	295	55
BPHM 450-PM-09	596	4,5	600	505	52	589	630	536	200	256	50	298	305	65

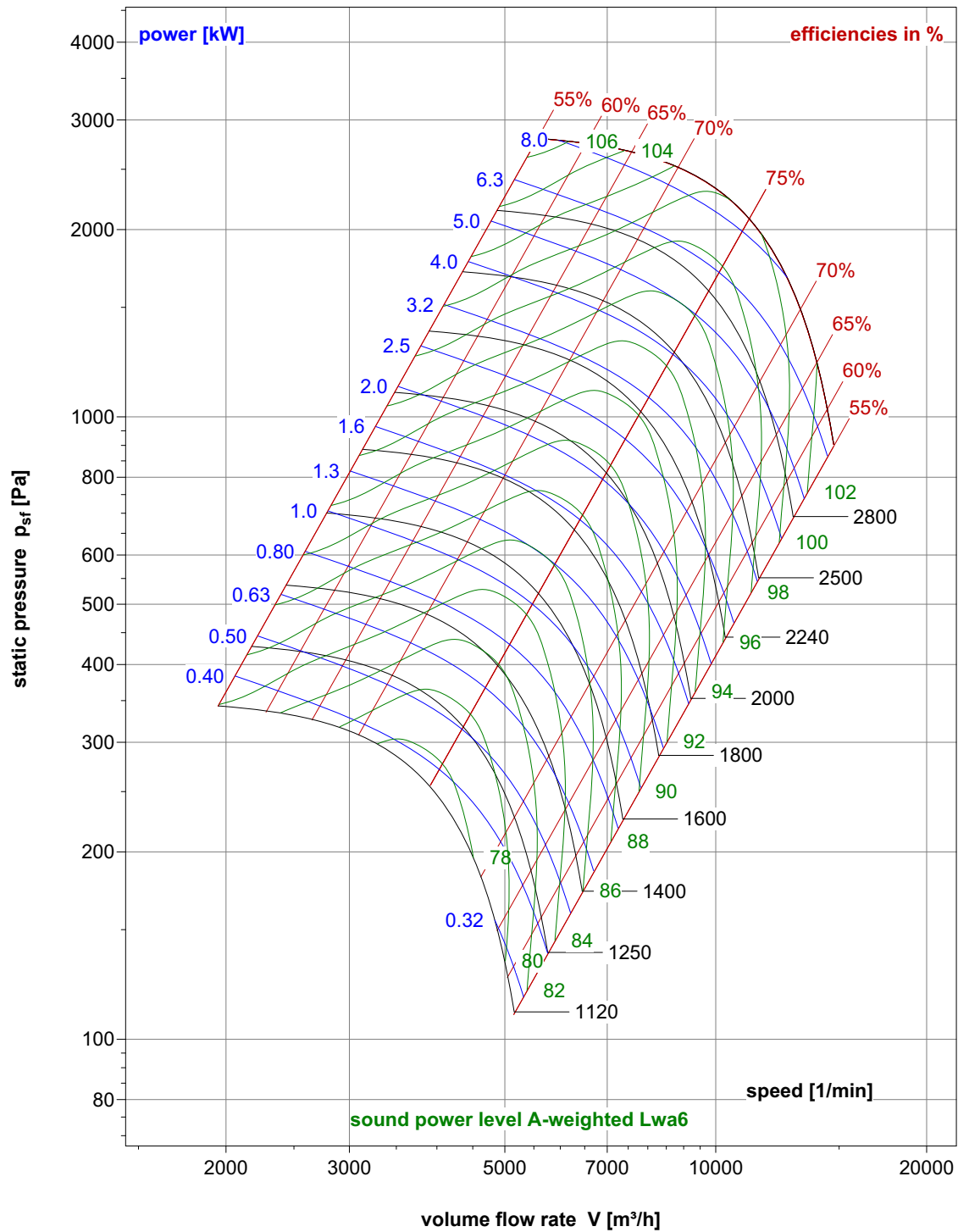
Vertical



Fan type	A	B	C	D	E	L1	L2	Weight (kg)
BPHV 450-4T-03	630	516	580	505	592	294,5	584	58
BPHV 450-4T-04	630	516	580	505	592	294,5	584	57
BPHV 450-4T-05	630	516	580	505	592	302,5	613	69
BPHV 450-4T-06	630	516	580	505	592	302,5	613	69
BPHV 450-4T-07	630	516	580	505	592	302,5	630	78
BPHV 450-4T-08	630	516	580	505	592	302,5	738	101
BPHV 450-2T-09	630	516	580	505	592	302,5	738	97
BPHV 450-PM-05	630	516	580	505	592	287,5	475	41
BPHV 450-PM-07	630	516	580	505	592	294,5	544	49
BPHV 450-PM-08	630	516	580	505	592	294,5	544	51
BPHV 450-PM-09	630	516	580	505	592	294,5	605	60

BPH 450

WHEEL PERFORMANCE CURVE



FAN SIZE		"K" factor correction for spectrum noise of BPH							
		Octave band (Hz)							
		63	125	250	500	1K	2K	4K	8K
BPH 450	inlet	-6	-5	-3	-4	-8	-11	-15	-20
	outlet	-3	-2	-1	-2	-4	-8	-11	-16

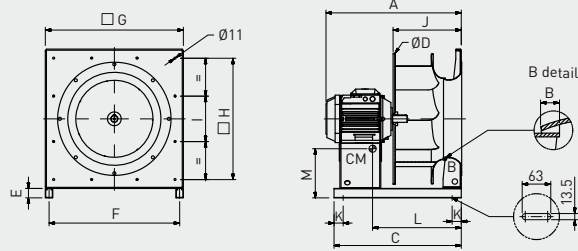
BPH 500

TECHNICAL CHARACTERISTICS

Fan type	Impeller Ø (mm)	Motor type	Motor power (kW)	Poles	Motor nominal rpm (1/rev)	IN (A)	Max BPH rpm (1/rev)	fmax (Hz)	Motor eff (%)
BPH 500-4T-04	500	AC	1,5	4	1420	3,4	1505	53	IE2
BPH 500-4T-05	500	AC	2,2	4	1420	4,7	1700	60	IE2
BPH 500-4T-06	500	AC	3	4	1420	6,4	1870	66	IE2
BPH 500-4T-07	500	AC	4	4	1440	8,2	2070	72	IE2
BPH 500-4T-08	500	AC	5,5	4	1455	11,4	2300	79	IE2
BPH 500-4T-09	500	AC	7,5	4	1455	15,2	2560	88	IE2
BPH 500-2T-10	500	AC	11	2	2940	20	2680	46	IE2
BPH 500-PM-05	500	PM	2,2	-	1800	4,6	1700	-	91,6%
BPH 500-PM-07	500	PM	4	-	3000	8,5	2080	-	92,6%
BPH 500-PM-08	500	PM	5,5	-	3000	11,7	2310	-	93,1%
BPH 500-PM-09	500	PM	7,5	-	3000	15,9	2560	-	93,7%
BPH 500-PM-10	500	PM	11	-	3000	23,3	2900	-	94,1%

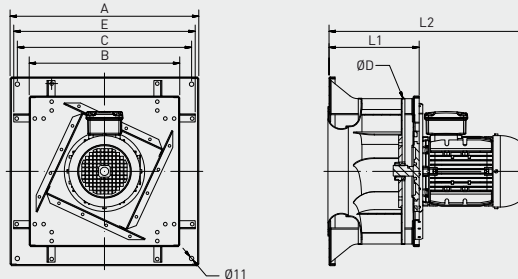
DIMENSIONS

Horizontal



Fan type	A	B	C	D	E	F	G	H	I	J	K	L	M	Weight (kg)
BPHM 500-4T-04	608	5	700	566	52	589	630	598	200	285	50	295	299	65
BPHM 500-4T-05	630	5	700	566	52	589	630	598	200	285	50	319	308	77
BPHM 500-4T-06	630	5	700	566	52	589	630	598	200	285	50	321	309	77
BPHM 500-4T-07	647	5	700	566	52	589	630	598	200	285	50	336	314	86
BPHM 500-4T-08	757	5	700	566	52	589	630	598	200	285	50	368	325	109
BPHM 500-4T-09	757	5	700	566	52	589	630	598	200	285	50	385	328	110
BPHM 500-2T-10	812	5	800	566	52	589	630	598	200	285	50	455	340	161
BPHM 500-PM-05	564	5	600	566	52	589	630	598	200	285	50	278	290	55
BPHM 500-PM-07	564	5	600	566	52	589	630	598	200	285	50	283	293	57
BPHM 500-PM-08	564	5	600	566	52	589	630	598	200	285	50	288	295	59
BPHM 500-PM-09	625	5	700	566	52	589	630	598	200	285	50	317	304	69
BPHM 500-PM-10	625	5	700	566	52	589	630	598	200	285	50	323	308	73

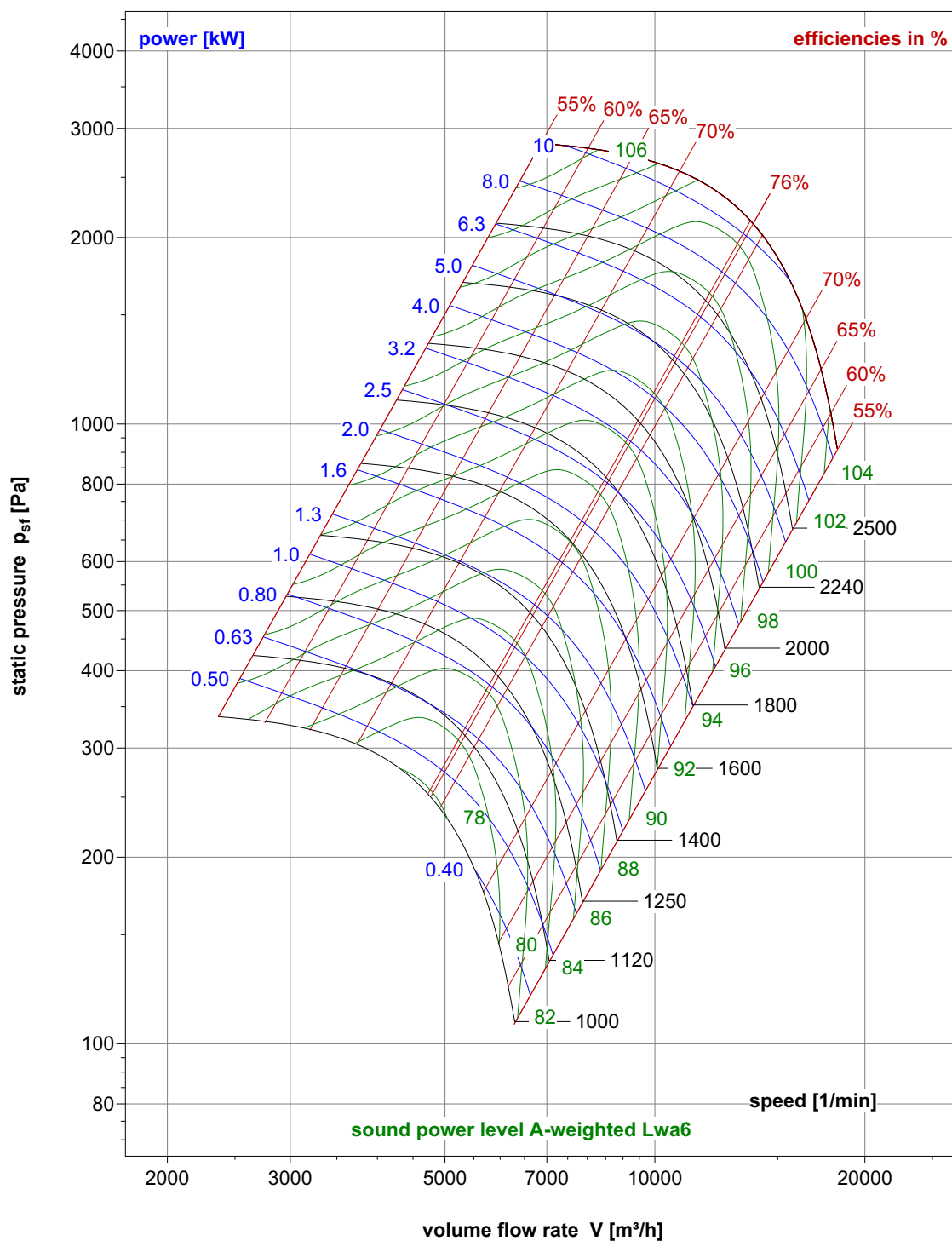
Vertical



Fan type	A	B	C	D	E	L1	L2	Weight (kg)
BPHV 500-4T-04	670	580	635	566	654	328	613	67
BPHV 500-4T-05	670	580	635	566	654	328	634	79
BPHV 500-4T-06	670	580	635	566	654	328	634	79
BPHV 500-4T-07	670	580	635	566	654	328	651	88
BPHV 500-4T-08	670	580	635	566	654	353	784	112
BPHV 500-4T-09	670	580	635	566	654	353	784	113
BPHV 500-2T-10	670	580	635	566	654	353	826	164
BPHV 500-PM-05	670	580	635	566	654	328	573	57
BPHV 500-PM-07	670	580	635	566	654	328	573	59
BPHV 500-PM-08	670	580	635	566	654	328	573	61
BPHV 500-PM-09	670	580	635	566	654	328	634	71
BPHV 500-PM-10	670	580	635	566	654	328	634	75

BPH 500

WHEEL PERFORMANCE CURVE



FAN SIZE		"K" factor correction for spectrum noise of BPH							
		Octave band (Hz)							
		63	125	250	500	1K	2K	4K	8K
BPH 500	inlet	-6	-5	-3	-4	-8	-11	-15	-20
	outlet	-3	-2	-1	-2	-4	-8	-11	-16

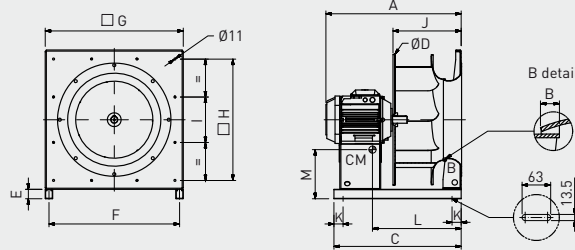
BPH 560

TECHNICAL CHARACTERISTICS

Fan type	Impeller Ø (mm)	Motor type	Motor power (kW)	Poles	Motor nominal rpm (1/rev)	IN (A)	Max BPH rpm (1/rev)	fmax (Hz)	Motor eff (%)
BPH 560-6T-04	560	AC	1,5	6	925	3,9	1200	65	IE2
BPH 560-4T-05	560	AC	2,2	4	1420	4,7	1370	48	IE2
BPH 560-4T-06	560	AC	3	4	1420	6,4	1510	53	IE2
BPH 560-4T-07	560	AC	4	4	1440	8,2	1695	59	IE2
BPH 560-4T-08	560	AC	5,5	4	1455	11,4	1860	64	IE2
BPH 560-4T-09	560	AC	7,5	4	1455	15,2	2070	71	IE2
BPH 560-4T-10	560	AC	11	4	1460	21,5	2320	79	IE2
BPH 560-PM-05	560	PM	2,2	-	1500	4,7	1387	-	91,5%
BPH 560-PM-07	560	PM	4	-	1800	8,4	1685	-	92,4%
BPH 560-PM-08	560	PM	5,5	-	1800	11,6	1890	-	92,6%
BPH 560-PM-09	560	PM	7,5	-	3000	15,9	2090	-	93,7%
BPH 560-PM-10	560	PM	11	-	3000	23,3	2380	-	94,1%

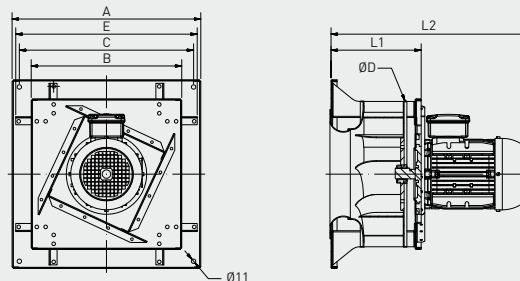
DIMENSIONS

Horizontal



Fan type	A	B	C	D	E	F	G	H	I	J	K	L	M	Weight (kg)
BPHM 560-6T-04	668	5,6	700	636	52	719	760	660	220	322	50	322	348	94
BPHM 560-4T-05	668	5,6	700	636	52	719	760	660	220	322	50	331	354	99
BPHM 560-4T-06	668	5,6	700	636	52	719	760	660	220	322	50	333	355	99
BPHM 560-4T-07	685	5,6	700	636	52	719	760	660	220	322	50	348	360	108
BPHM 560-4T-08	795	5,6	800	636	52	719	760	660	220	322	50	380	368	132
BPHM 560-4T-09	795	5,6	800	636	52	719	760	660	220	322	50	396	372	133
BPHM 560-4T-10	850	5,6	800	636	52	719	760	660	220	322	50	466	391	201
BPHM 560-PM-05	602	5,6	700	636	52	719	760	660	220	322	50	296	337	77
BPHM 560-PM-07	602	5,6	700	636	52	719	760	660	220	322	50	306	342	82
BPHM 560-PM-08	663	5,6	700	636	52	719	760	660	220	322	50	329	350	91
BPHM 560-PM-09	663	5,6	700	636	52	719	760	660	220	322	50	329	350	91
BPHM 560-PM-10	663	5,6	700	636	52	719	760	660	220	322	50	335	353	95

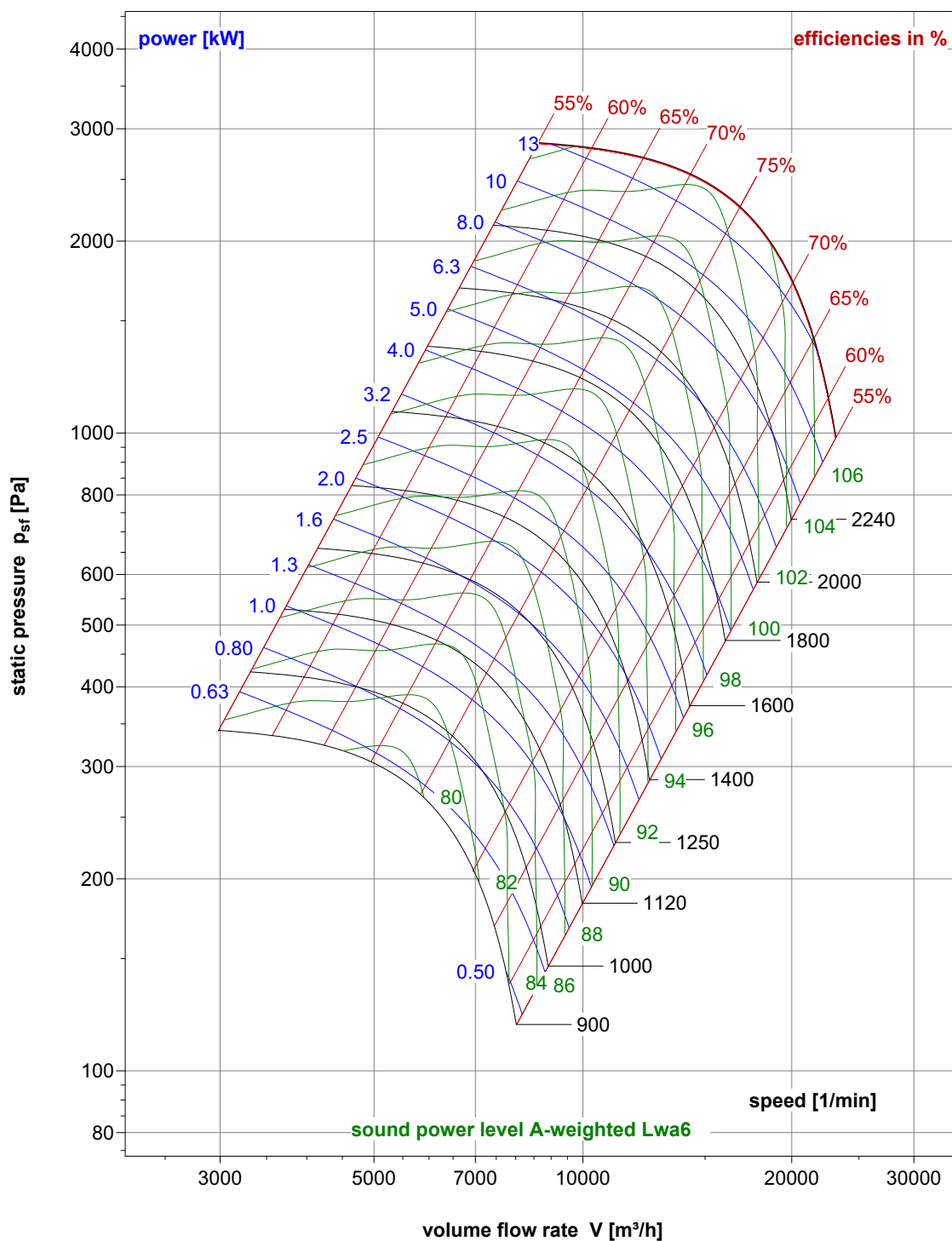
Vertical



Fan type	A	B	C	D	E	L1	L2	Weight (kg)
BPHV 560-6T-04	730	645	689	636	714	366	672	86
BPHV 560-4T-05	730	645	689	636	714	366	672	92
BPHV 560-4T-06	730	645	689	636	714	366	672	92
BPHV 560-4T-07	730	645	689	636	714	366	689	101
BPHV 560-4T-08	730	645	689	636	714	388	819	125
BPHV 560-4T-09	730	645	689	636	714	388	819	126
BPHV 560-4T-10	730	645	689	636	714	388	861	195
BPHV 560-PM-05	730	645	689	636	714	366	611	70
BPHV 560-PM-07	730	645	689	636	714	366	611	75
BPHV 560-PM-08	730	645	689	636	714	366	672	84
BPHV 560-PM-09	730	645	689	636	714	366	672	84
BPHV 560-PM-10	730	645	689	636	714	366	672	88

BPH 560

WHEEL PERFORMANCE CURVE



FAN SIZE		"K" factor correction for spectrum noise of BPH							
		Octave band (Hz)							
		63	125	250	500	1K	2K	4K	8K
BPH 560	inlet	-5	-2	-1	-6	-8	-10	-15	-20
	outlet	-2	0	-4	-4	-4	-7	-12	-17

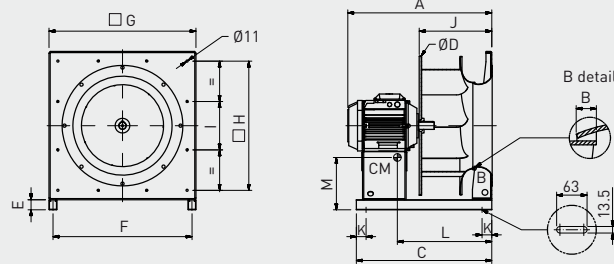
BPH 630

TECHNICAL CHARACTERISTICS

Fan type	Impeller Ø (mm)	Motor type	Motor power (kW)	Poles	Motor nominal rpm (1/rev)	IN (A)	Max BPH rpm (1/rev)	fmax (Hz)	Motor eff (%)
BPH 630-6T-05	630	AC	2,2	6	940	5,2	1130	60	IE2
BPH 630-6T-06	630	AC	3	6	950	7,2	1215	64	IE2
BPH 630-4T-07	630	AC	4	4	1440	8,2	1380	48	IE2
BPH 630-4T-08	630	AC	5,5	4	1455	11,4	1485	51	IE2
BPH 630-4T-09	630	AC	7,5	4	1455	15,2	1630	56	IE2
BPH 630-4T-10	630	AC	11	4	1460	21,5	1870	64	IE2
BPH 630-4T-11	630	AC	15	4	1460	28,5	2070	71	IE2
BPH 630-PM-05	630	PM	2,2	-	1500	4,7	1140	-	91,5%
BPH 630-PM-08	630	PM	5,5	-	1500	11,6	1555	-	92,5%
BPH 630-PM-09	630	PM	7,5	-	1800	15,8	1720	-	93,3%
BPH 630-PM-10	630	PM	11	-	1800	23,2	1800	-	94,0%

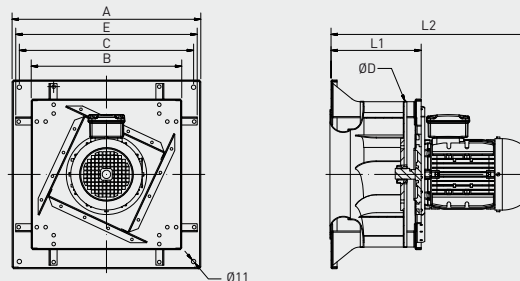
DIMENSIONS

Horizontal



Fan type	A	B	C	D	E	F	G	H	I	J	K	L	M	Weight (kg)
BPHM 630-6T-05	720	6,3	800	716	52	719	760	668	250	365	50	364	361	110
BPHM 630-6T-06	830	6,3	800	716	52	719	760	668	250	365	50	392	370	128
BPHM 630-4T-07	720	6,3	800	716	52	719	760	668	250	365	50	371	364	115
BPHM 630-4T-08	830	6,3	800	716	52	719	760	668	250	365	50	402	375	138
BPHM 630-4T-09	830	6,3	800	716	52	719	760	668	250	365	50	418	377	139
BPHM 630-4T-10	885	6,3	900	716	52	719	760	668	250	365	50	491	392	208
BPHM 630-4T-11	930	6,3	900	716	52	719	760	668	250	365	50	515	396	227
BPHM 630-PM-05	637	6,3	800	716	52	719	760	668	250	365	50	321	344	84
BPHM 630-PM-08	698	6,3	800	716	52	719	760	668	250	365	50	353	355	98
BPHM 630-PM-09	698	6,3	800	716	52	719	760	668	250	365	50	359	358	102
BPHM 630-PM-10	720	6,3	800	716	52	719	760	668	250	365	50	364	360	105

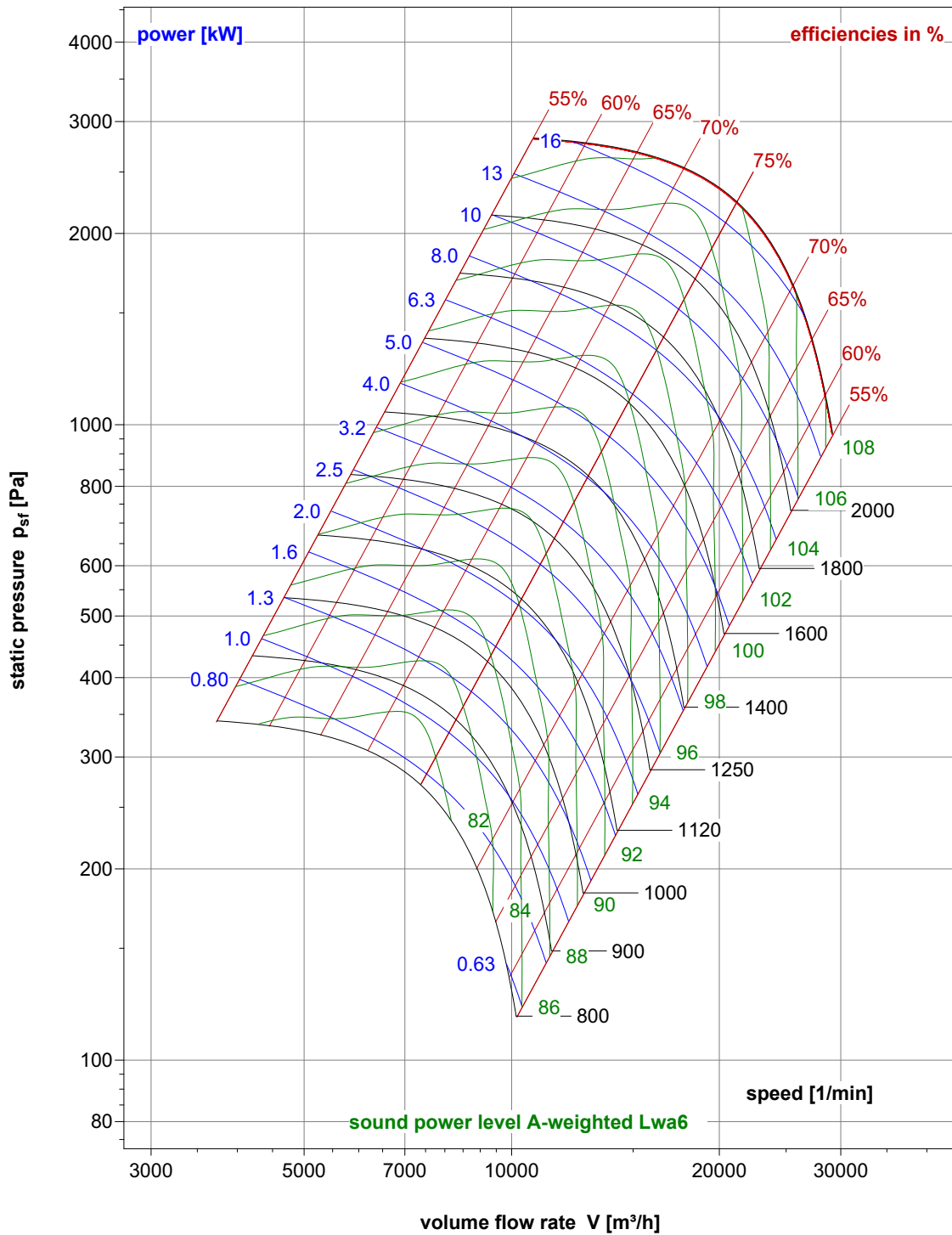
Vertical



Fan type	A	B	C	D	E	L1	L2	Weight (kg)
BPHV 630-6T-05	840	722	800	716	824	402	725	111
BPHV 630-6T-06	840	722	800	716	824	428	859	130
BPHV 630-4T-07	840	722	800	716	824	402	725	116
BPHV 630-4T-08	840	722	800	716	824	428	859	140
BPHV 630-4T-09	840	722	800	716	824	428	859	141
BPHV 630-4T-10	840	722	800	716	824	428	901	210
BPHV 630-4T-11	840	722	800	716	824	428	946	229
BPHV 630-PM-05	840	722	800	716	824	402	647	85
BPHV 630-PM-08	840	722	800	716	824	402	708	99
BPHV 630-PM-09	840	722	800	716	824	402	708	103
BPHV 630-PM-10	840	722	800	716	824	402	730	106

BPH 630

WHEEL PERFORMANCE CURVE



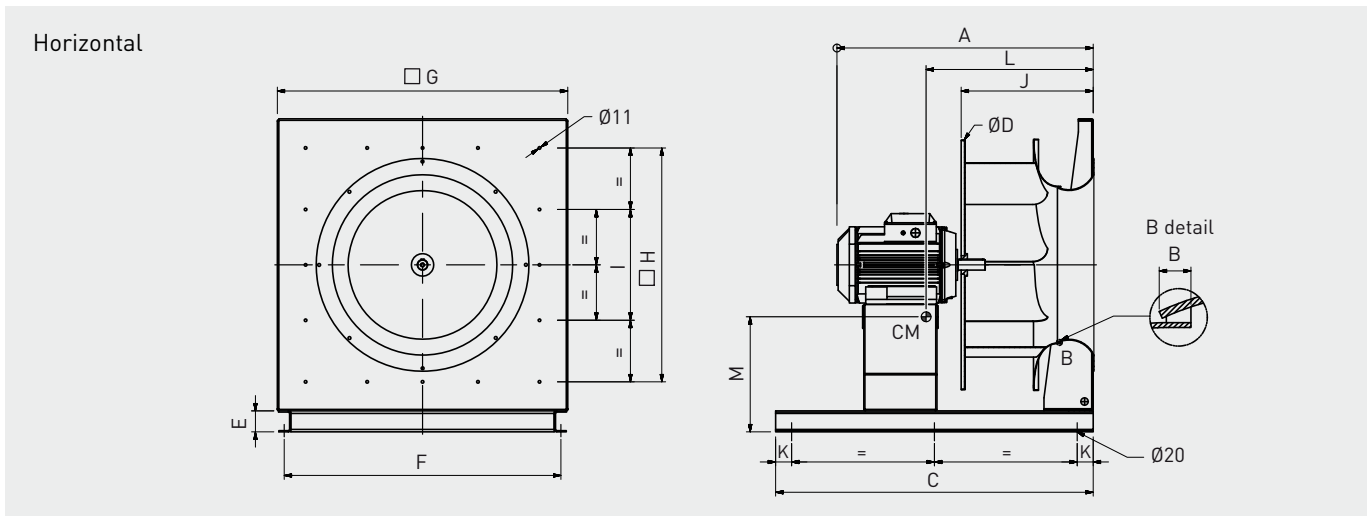
FAN SIZE		"K" factor correction for spectrum noise of BPH							
		Octave band (Hz)							
		63	125	250	500	1K	2K	4K	8K
BPH 630	inlet	-5	-2	-1	-6	-8	-10	-15	-20
	outlet	-2	0	-4	-4	-4	-7	-12	-17

BPH 710

TECHNICAL CHARACTERISTICS

Fan type	Impeller Ø (mm)	Motor type	Motor power (kW)	Poles	Motor nominal rpm (1/rev)	IN (A)	Max BPH rpm (1/rev)	fmax (Hz)	Motor eff (%)
BPH 710-6T-06	710	AC	3	6	950	7,2	1025	54	IE2
BPH 710-6T-07	710	AC	4	6	950	9,4	1125	59	IE2
BPH 710-6T-08	710	AC	5,5	6	950	12,6	1255	66	IE2
BPH 710-4T-09	710	AC	7,5	4	1455	15,2	1395	48	IE2
BPH 710-4T-10	710	AC	11	4	1460	21,5	1580	54	IE2
BPH 710-4T-11	710	AC	15	4	1460	28,5	1750	60	IE2
BPH 710-4T-12	710	AC	18,5	4	1460	35,5	1850	63	IE2
BPH 710-PM-06	710	PM	3	-	1500	6,4	1045	-	92,0%
BPH 710-PM-08	710	PM	5,5	-	1500	11,7	1280	-	92,5%
BPH 710-PM-09	710	PM	7,5	-	1500	15,9	1420	-	93,1%
BPH 710-PM-10	710	PM	11	-	1800	23,2	1610	-	94,0%
BPH 710-PM-11	710	PM	15	-	1800	31,7	1780	-	94,2%

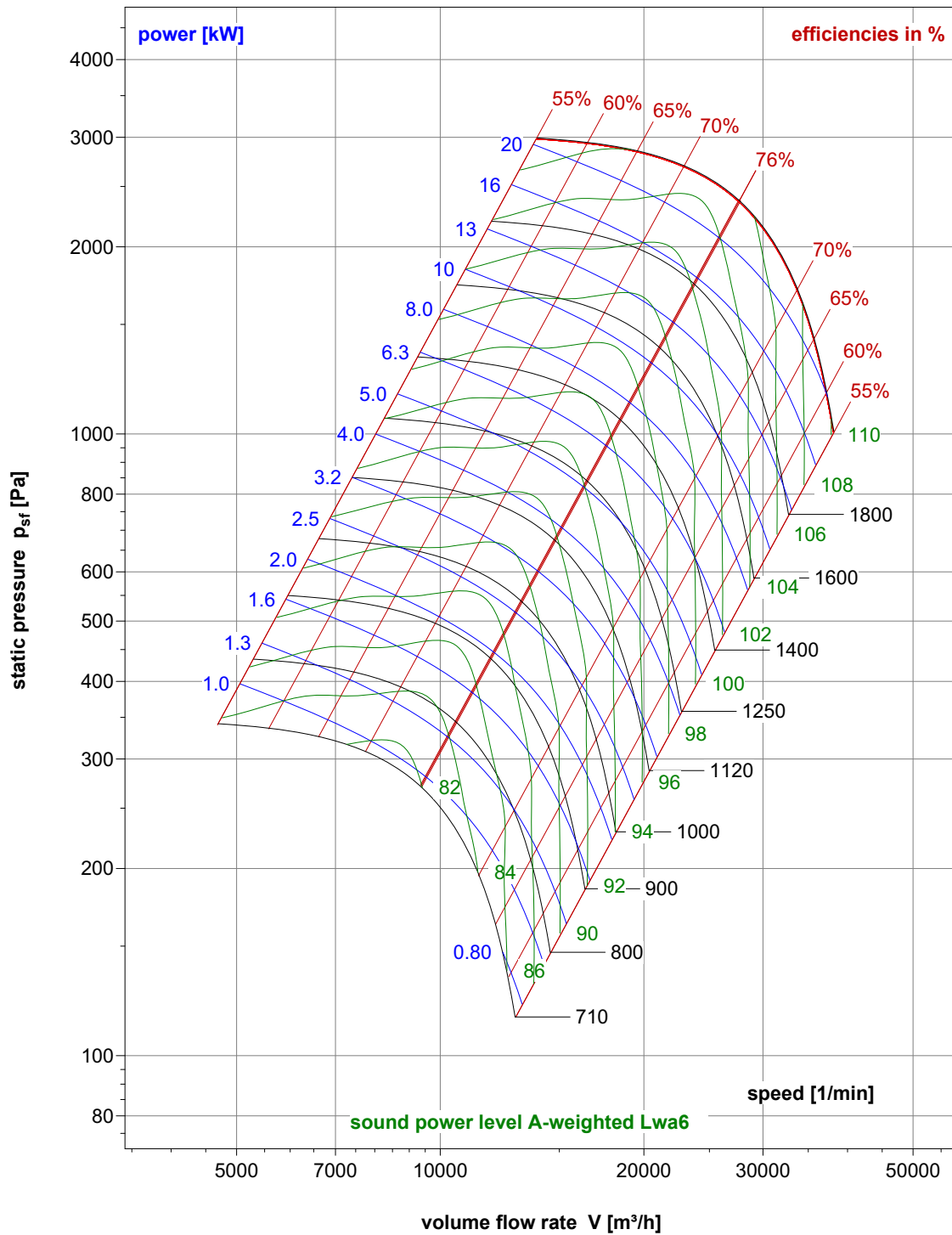
DIMENSIONS



Fan type	A	B	C	D	E	F	G	H	I	J	K	L	M	Weight (kg)
BPHM 710-6T-06	882	7,1	900	806	85	912	960	830	300	411	65	406	417	195
BPHM 710-6T-07	882	7,1	900	806	85	912	960	830	300	411	65	423	426	206
BPHM 710-6T-08	882	7,1	900	806	85	912	960	830	300	411	65	427	429	210
BPHM 710-4T-09	882	7,1	900	806	85	912	960	830	300	411	65	426	428	206
BPHM 710-4T-10	937	7,1	900	806	85	912	960	830	300	411	65	492	456	277
BPHM 710-4T-11	982	7,1	900	806	85	912	960	830	300	411	65	515	463	296
BPHM 710-4T-12	1019	7,1	900	806	85	912	960	830	300	411	65	532	472	314
BPHM 710-PM-06	693	7,1	900	806	85	912	960	830	300	411	65	364	385	153
BPHM 710-PM-08	755	7,1	900	806	85	912	960	830	300	411	65	380	397	165
BPHM 710-PM-09	755	7,1	900	806	85	912	960	830	300	411	65	385	401	169
BPHM 710-PM-10	777	7,1	900	806	85	912	960	830	300	411	65	388	404	172
BPHM 710-PM-11	917	7,1	900	806	85	912	960	830	300	411	65	421	424	196

BPH 710

WHEEL PERFORMANCE CURVE



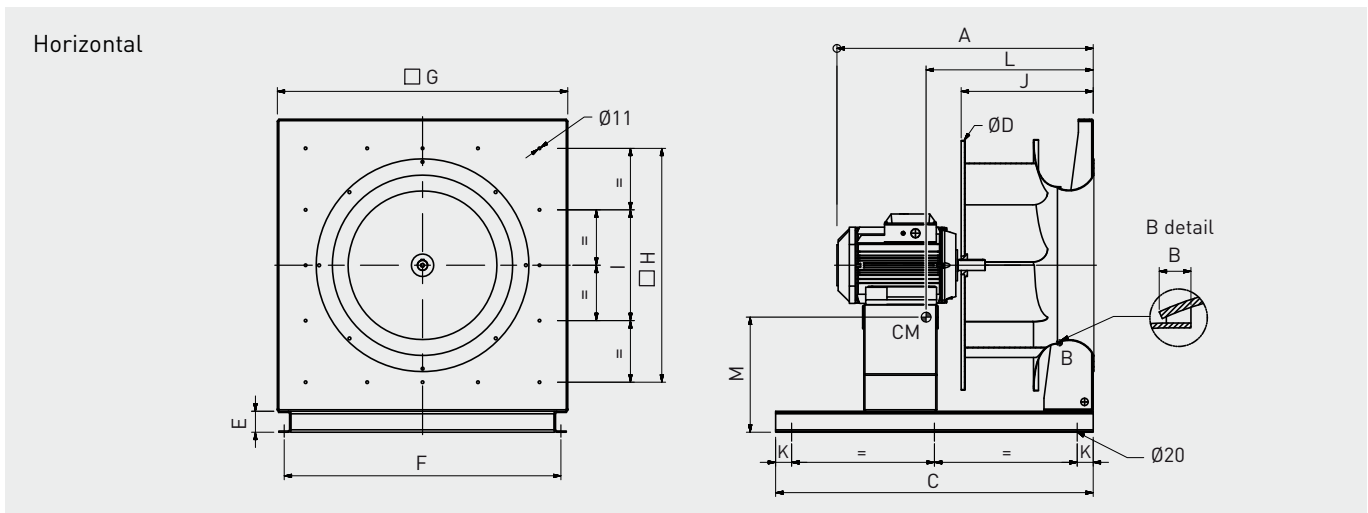
FAN SIZE		"K" factor correction for spectrum noise of BPH							
		Octave band (Hz)							
		63	125	250	500	1K	2K	4K	8K
BPH 710	inlet	-5	-2	-1	-6	-8	-10	-15	-20
	outlet	-2	0	-4	-4	-4	-7	-12	-17

BPH 800

TECHNICAL CHARACTERISTICS

Fan type	Impeller Ø (mm)	Motor type	Motor power (kW)	Poles	Motor nominal rpm (1/rev)	IN (A)	Max BPH rpm (1/rev)	fmax (Hz)	Motor eff (%)
BPH 800-6T-07	800	AC	4	6	950	9,4	930	49	IE2
BPH 800-6T-08	800	AC	5,5	6	950	12,6	1030	54	IE2
BPH 800-6T-09	800	AC	7,5	6	960	17	1150	60	IE2
BPH 800-6T-10	800	AC	11	6	960	24,5	1305	68	IE2
BPH 800-4T-11	800	AC	15	4	1460	28,5	1430	49	IE2
BPH 800-4T-12	800	AC	18,5	4	1460	35,5	1550	53	IE2
BPH 800-4T-13	800	AC	22	4	1460	41,5	1630	56	IE2
BPH 800-PM-08	800	PM	5,5	-	1500	11,7	1055	-	92,5%
BPH 800-PM-10	800	PM	11	-	1500	23,3	1330	-	94,0%
BPH 800-PM-11	800	PM	15	-	1500	31,8	1470	-	94,4%

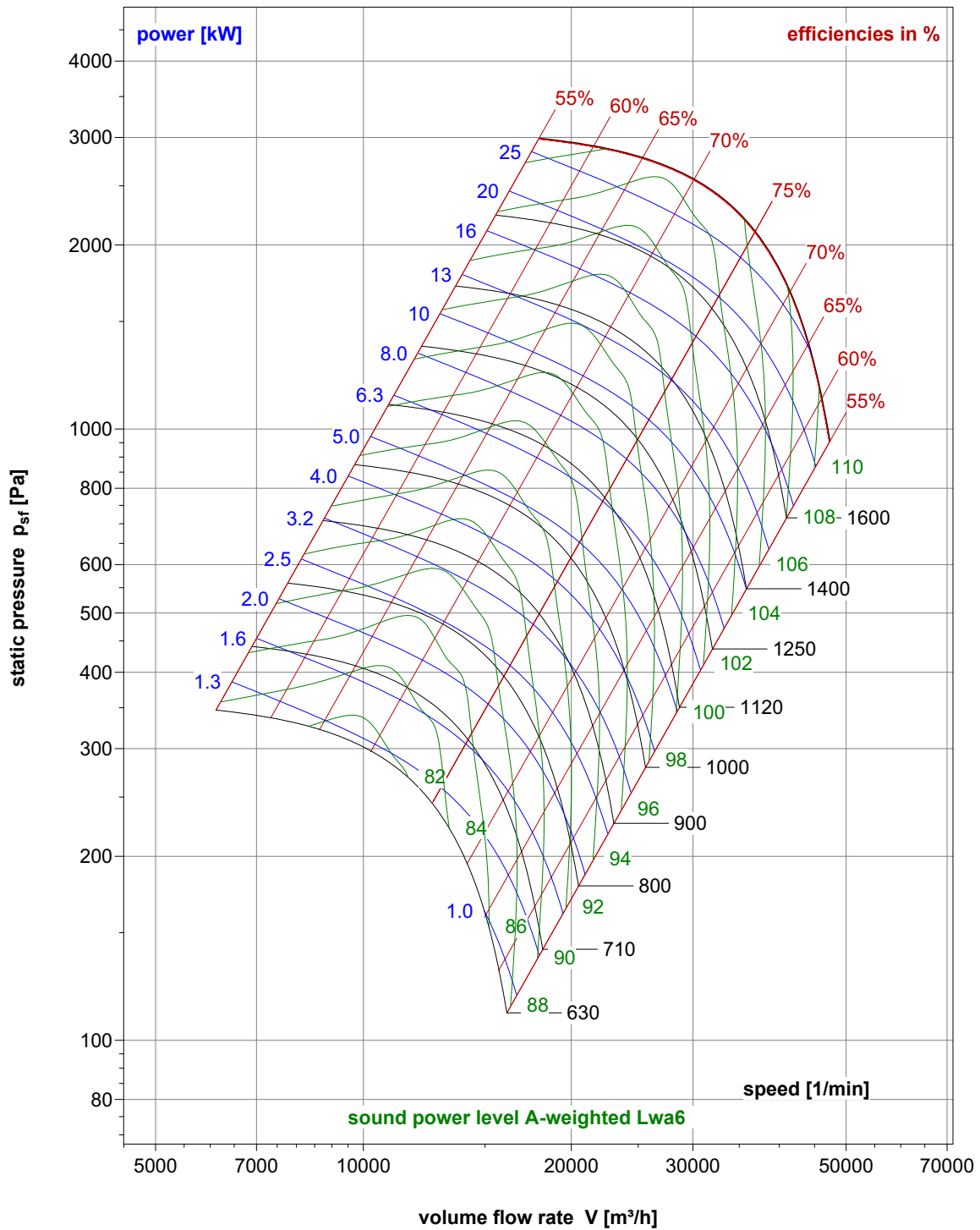
DIMENSIONS



Fan type	A	B	C	D	E	F	G	H	I	J	K	L	M	Weight (kg)
BPHM 800-6T-07	929	8	1000	909	85	912	960	830	300	458	65	453	433	222
BPHM 800-6T-08	929	8	1000	909	85	912	960	830	300	458	65	458	436	226
BPHM 800-6T-09	984	8	1000	909	85	912	960	830	300	458	65	527	462	297
BPHM 800-6T-10	1029	8	1000	909	85	912	960	830	300	458	65	543	466	295
BPHM 800-4T-11	1029	8	1000	909	85	912	960	830	300	458	65	545	467	312
BPHM 800-4T-12	1066	8	1000	909	85	912	960	830	300	458	65	563	475	330
BPHM 800-4T-13	1104	8	1000	909	85	912	960	830	300	458	65	582	480	342
BPHM 800-PM-08	802	8	1000	909	85	912	960	830	300	458	65	410	408	181
BPHM 800-PM-10	901	8	1000	909	85	912	960	830	300	458	65	443	427	205
BPHM 800-PM-11	964	8	1000	909	85	912	960	830	300	458	65	450	432	212

BPH 800

WHEEL PERFORMANCE CURVE



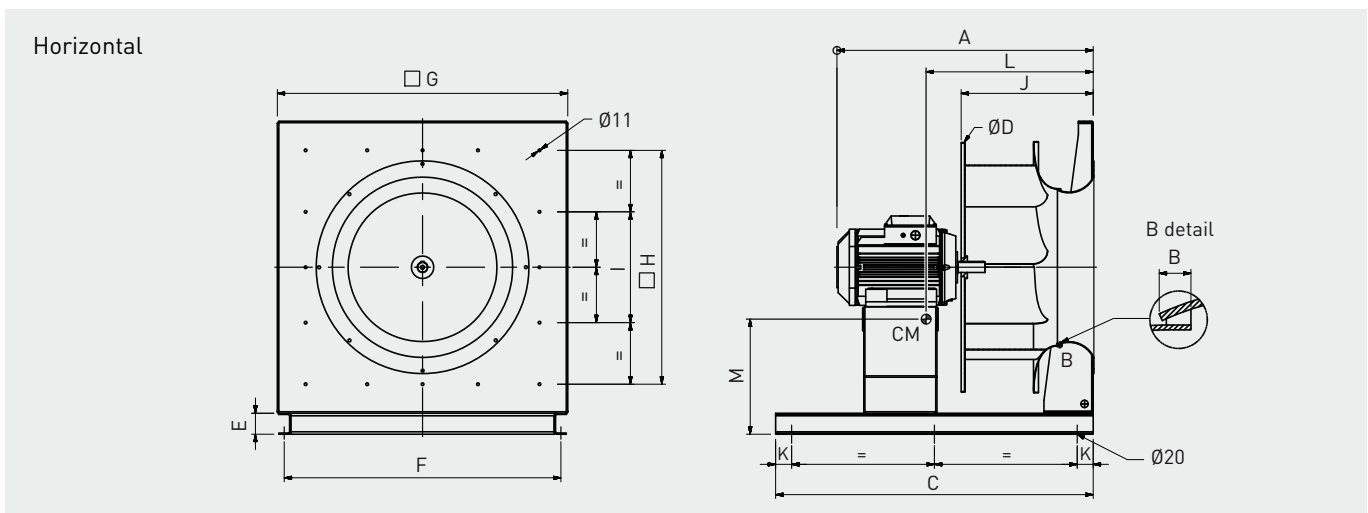
FAN SIZE		"K" factor correction for spectrum noise of BPH							
		Octave band (Hz)							
		63	125	250	500	1K	2K	4K	8K
BPH 800	inlet	-3	-1	-2	-7	-7	-10	-15	-23
	outlet	1	2	-4	-4	-5	-7	-14	-19

BPH 900

TECHNICAL CHARACTERISTICS

Fan type	Impeller Ø (mm)	Motor type	Motor power (kW)	Poles	Motor nominal rpm (1/rev)	IN (A)	Max BPH rpm (1/rev)	fmax (Hz)	Motor eff (%)
BPH 900-8T-07	900	AC	4	8	715	10	760	53	IE2
BPH 900-8T-08	900	AC	5,5	8	710	13	850	60	IE2
BPH 900-6T-09	900	AC	7,5	6	960	17	945	49	IE2
BPH 900-6T-10	900	AC	11	6	960	24,5	1060	55	IE2
BPH 900-6T-11	900	AC	15	6	970	31,5	1180	61	IE2
BPH 900-6T-12	900	AC	18,5	6	975	38,5	1270	65	IE2
BPH 900-6T-13	900	AC	22	6	975	45,5	1345	69	IE2
BPH 900-4T-14	900	AC	30	4	1460	41,5	1480	51	IE2
BPH 900-PM-10	900	PM	11	-	1500	23,3	1095	-	94,0%
BPH 900-PM-11	900	PM	15	-	1500	31,8	1215	-	94,4%

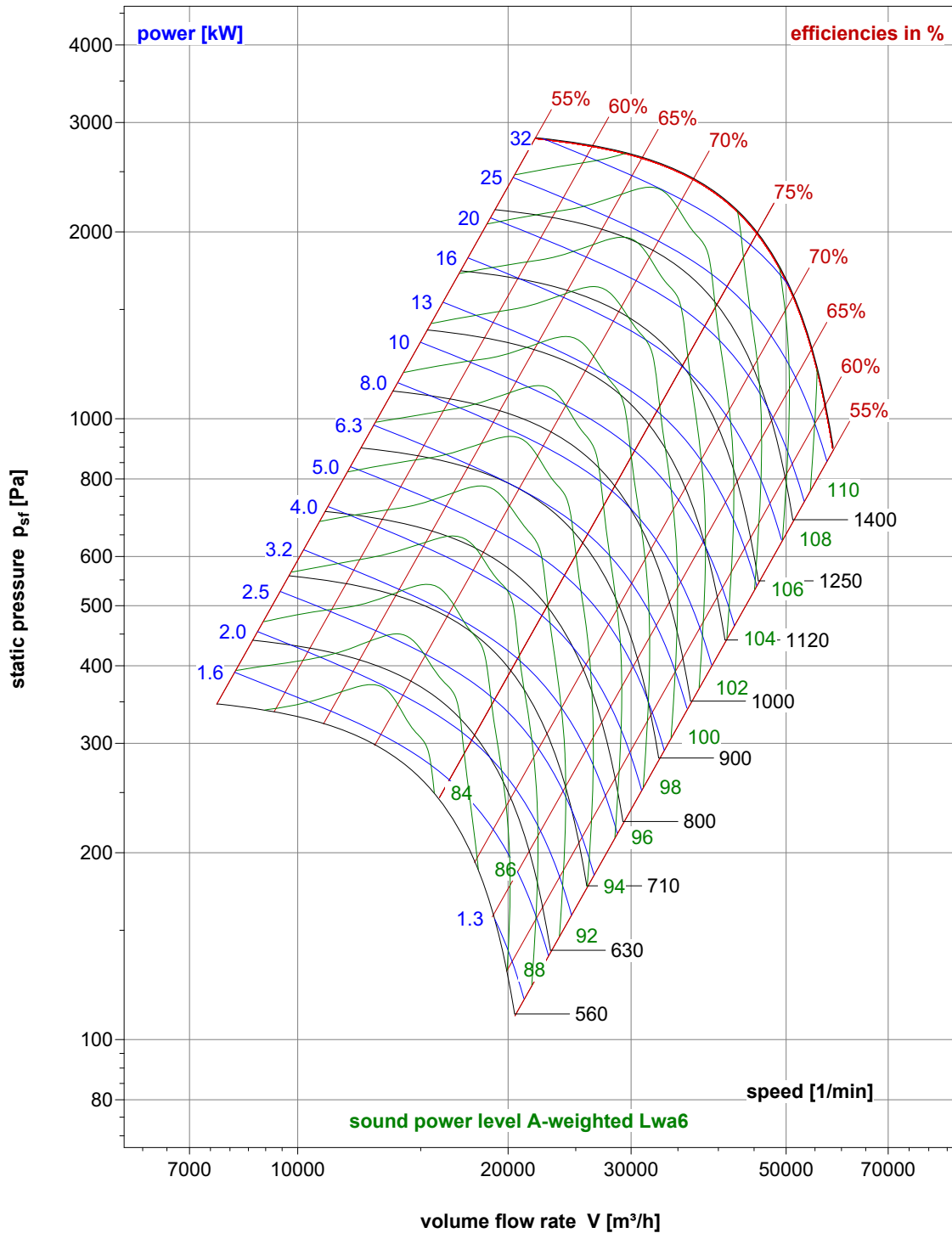
DIMENSIONS



Fan type	A	B	C	D	E	F	G	H	I	J	K	L	M	Weight (kg)
BPHM 900-8T-07	1033	9	1100	1010	85	1132	1180	950	450	501	65	522	539	336
BPHM 900-8T-08	1033	9	1100	1010	85	1132	1180	950	450	501	65	530	544	349
BPHM 900-6T-09	1040	9	1100	1010	85	1132	1180	950	450	501	65	535	547	370
BPHM 900-6T-10	1085	9	1100	1010	85	1132	1180	950	450	501	65	550	551	368
BPHM 900-6T-11	1160	9	1100	1010	85	1132	1180	950	450	501	65	585	563	416
BPHM 900-6T-12	1203	9	1100	1010	85	1132	1180	950	450	501	65	623	572	468
BPHM 900-6T-13	1203	9	1100	1010	85	1132	1180	950	450	501	65	627	575	480
BPHM 900-4T-14	1203	9	1100	1010	85	1132	1180	950	450	501	65	625	574	473
BPHM 900-PM-10	957	9	1100	1010	85	1132	1180	950	450	501	65	467	513	281
BPHM 900-PM-11	1008	9	1100	1010	85	1132	1180	950	450	501	65	473	517	288

BPH 900

WHEEL PERFORMANCE CURVE



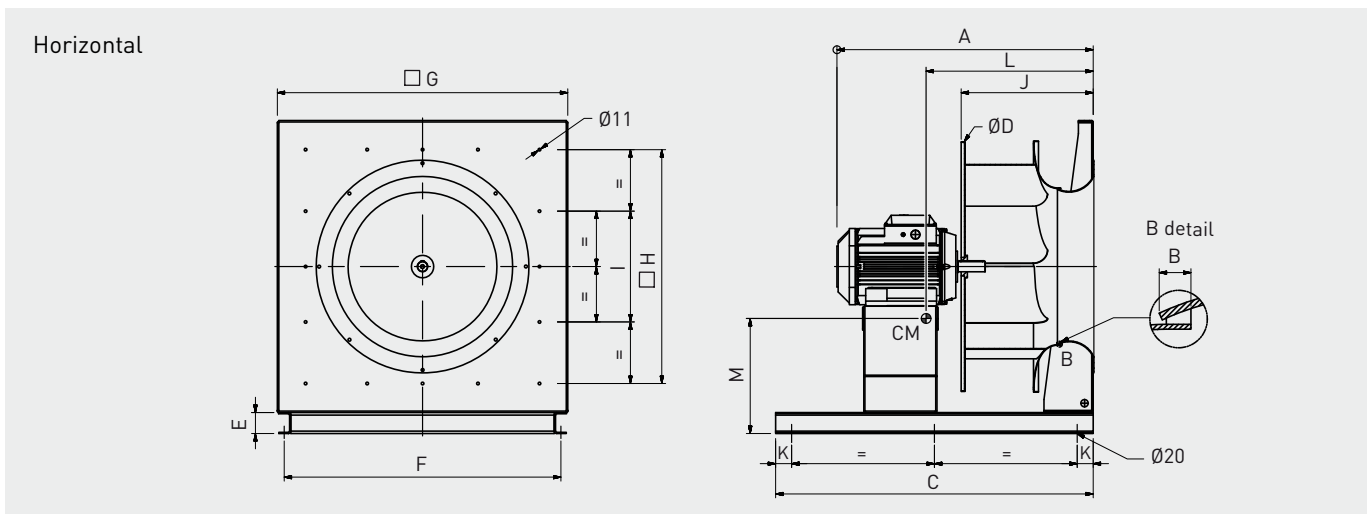
FAN SIZE		"K" factor correction for spectrum noise of BPH							
		Octave band (Hz)							
		63	125	250	500	1K	2K	4K	8K
BPH 900	inlet	-3	-1	-2	-7	-7	-10	-15	-23
	outlet	1	2	-4	-4	-5	-7	-14	-19

BPH 1000

TECHNICAL CHARACTERISTICS

Fan type	Impeller Ø (mm)	Motor type	Motor power (kW)	Poles	Motor nominal rpm (1/rev)	IN (A)	Max BPH rpm (1/rev)	fmax (Hz)	Motor eff (%)
BPH 1000-8T-08	1000	AC	5,5	8	710	13	710	50	IE2
BPH 1000-8T-09	1000	AC	7,5	8	715	17,6	790	55	IE2
BPH 1000-8T-10	1000	AC	11	8	725	24,5	900	62	IE2
BPH 1000-6T-10	1000	AC	11	6	960	24,5	865	45	IE2
BPH 1000-6T-11	1000	AC	15	6	970	31,5	990	51	IE2
BPH 1000-6T-12	1000	AC	18,5	6	975	38,5	1050	54	IE2
BPH 1000-6T-13	1000	AC	22	6	975	45,5	1130	58	IE2
BPH 1000-6T-14	1000	AC	30	6	978	61	1250	64	IE2
BPH 1000-4T-15	1000	AC	37	4	1470	??	1290	44	IE2
BPH 1000-PM-10	1000	PM	11	-	1500	23,3	912	-	94,0%
BPH 1000-PM-12	1000	PM	18,5	-	1500	39,3	1099	-	94,8%

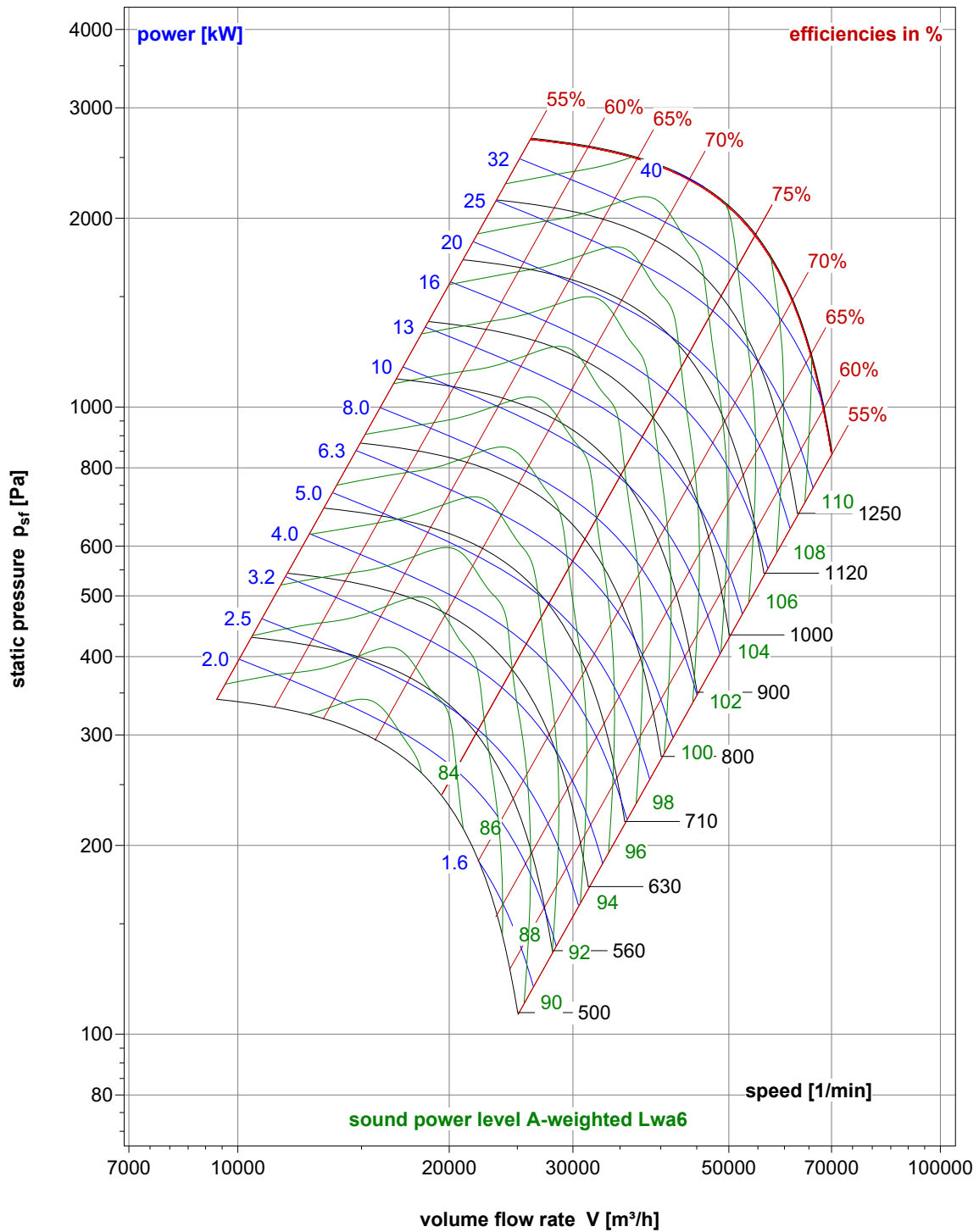
DIMENSIONS



Fan type	A	B	C	D	E	F	G	H	I	J	K	L	M	Weight (kg)
BPHM 1000-8T-08	1090	10	1200	1140	85	1132	1180	1036	500	558	65	565	552	376
BPHM 1000-8T-09	1134	10	1200	1140	85	1132	1180	1036	500	558	65	584	558	395
BPHM 1000-8T-10	1194	10	1200	1140	85	1132	1180	1036	500	558	65	616	567	431
BPHM 1000-6T-10	1142	10	1200	1140	85	1132	1180	1036	500	558	65	584	558	395
BPHM 1000-6T-11	1217	10	1200	1140	85	1132	1180	1036	500	558	65	619	569	443
BPHM 1000-6T-12	1260	10	1200	1140	85	1132	1180	1036	500	558	65	657	577	495
BPHM 1000-6T-13	1260	10	1200	1140	85	1132	1180	1036	500	558	65	662	578	507
BPHM 1000-6T-14	1333	10	1200	1140	85	1132	1180	1036	500	558	65	702	595	616
BPHM 1000-4T-15	1333	10	1200	1140	85	1132	1180	1036	500	558	65	695	592	599
BPHM 1000-PM-10	1014	10	1200	1140	85	1132	1180	1036	500	558	65	502	524	308
BPHM 1000-PM-12	1065	10	1200	1140	85	1132	1180	1036	500	558	65	513	531	322

BPH 1000

WHEEL PERFORMANCE CURVE



FAN SIZE		"K" factor correction for spectrum noise of BPH							
		Octave band (Hz)							
		63	125	250	500	1K	2K	4K	8K
BPH 1000	inlet	-3	-1	-2	-7	-7	-10	-15	-23
	outlet	1	2	-4	-4	-5	-7	-14	-19



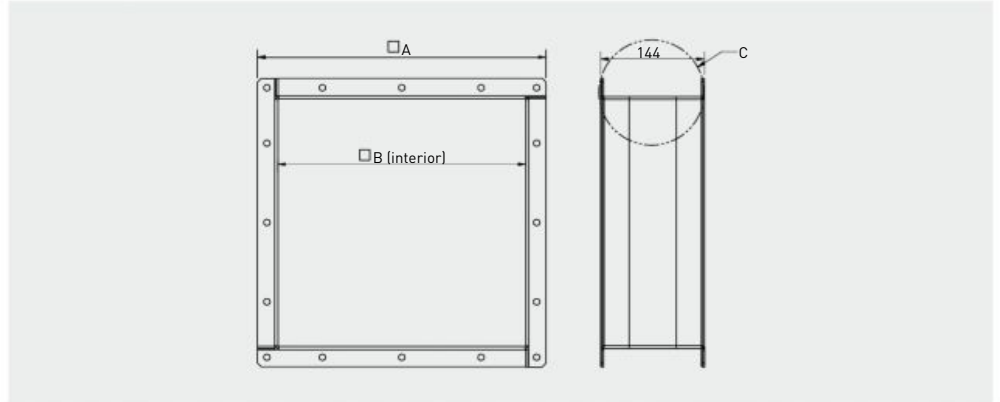


Accessories

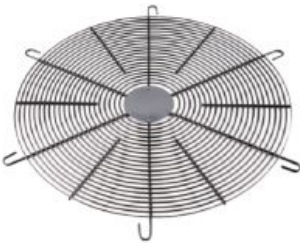


OUTLET FLEXIBLE CONNECTOR

Flexible connector manufactured from 2 inlet flanges mounted with a flexible material to connect the duct at the fan outlet.



Diameter	Code	Description	Dimensions (mm)	
			A	B
225	5416727900	BRIDA ICL METR 250-BPH 225-280	378	322
250	5416727900	BRIDA ICL METR 250-BPH 225-280	378	322
280	5416727900	BRIDA ICL METR 250-BPH 225-280	378	322
315	5416760600	BRIDA ICL BPH 315	390	334
355	5416727700	BRIDA ICL METR 315-BPH 355	460	404
400	5416760700	BRIDA ICL BPH 400	490	434
450	5416727500	BRIDA ICL METR 400-BPH 450	562	506
500	5416727400	BRIDA ICL METR 450-BPH 500	624	568
560	5416760800	BRIDA ICL BPH 560	686	630
630	5416727300	BRIDA ICL METR 500-BPH 630	694	638
710	5416727100	BRIDA ICL METR 630-BPH 700/800	856	800
800	5416727100	BRIDA ICL METR 630-BPH 700/800	856	800
900	5416760900	BRIDA ICL BPH 900	976	920
1000	5416726900	BRIDA ICL METR 800-BPH 1000	1062	1006



INLET PROTECTION GUARD

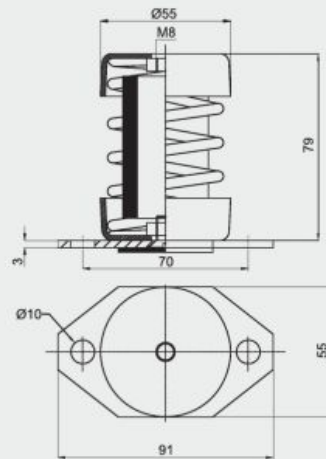
Inlet protection guard to prevent any contact with the fan impeller.



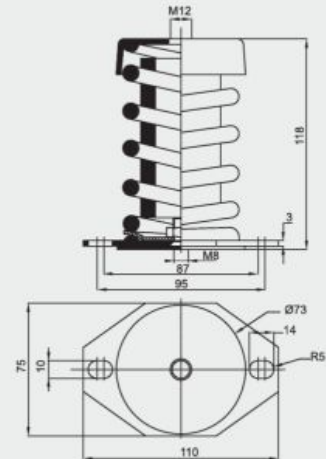
ANTIVIBRATION MOUNTS (AM)

Metallic bases with open holes to allow assembly and centring on the ground.

Dimensions AM-25 to AM-125



Dimensions AM-250

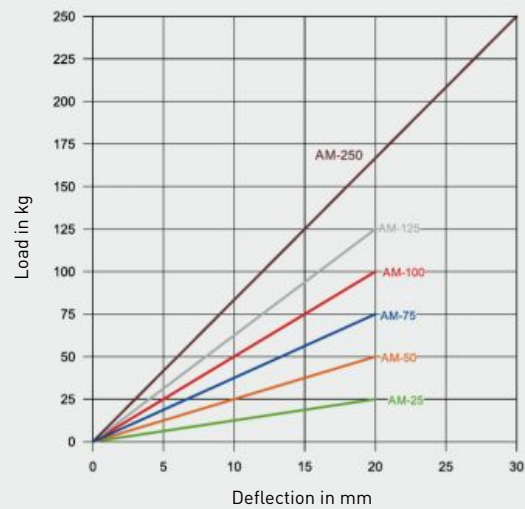


Code	Model	Maximum Load in kg
5130863900	AMORTIGUADOR DE MUELLE AM-25M	25 kg/unit
5130864000	AMORTIGUADOR DE MUELLE AM-50M	50 kg/unit
5130864100	AMORTIGUADOR DE MUELLE AM-75M	75 kg/unit
5130865800	AMORTIGUADOR DE MUELLE AM-100M	100 kg/unit
5130963900	AMORTIGUADOR DE MUELLE AM-125M	125 kg/unit
5130964000	AMORTIGUADOR DE MUELLE AM-250M	250 kg/unit

Please remind this is a unitary code so you should order 4 units of this code for 1 BPH.

* Divide the total weight of the fan by 4, as you need 4 antivibration mounts per unit, and then look for the appropriate model according to their load.

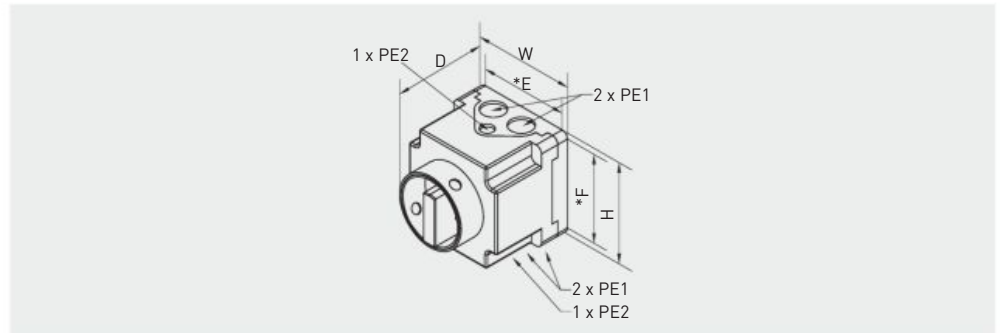
Deflection





INTZ

ON/OFF electrical isolation switch. 3 and 6 pole electrical isolation switch. 3-point lock. Open / close position reset. 230V single-phase or 400V-50/60Hz three-phase motor. IP55 Protection Index: outdoor installation if possible. Supplied with cable.



Model	Switch output main contacts (AC23)		W (mm)	H (mm)	D (mm)	E* (mm)	F* (mm)	PE1	PE2
	Confort	Smoke extract**							
1 speed									
INTZ 1V15	15,4 A	10,2 A	90,5	90,5	102	80	80	M20	M12
INTZ 1V22	22,4 A	14,9 A	115	115	136	100	100	M25	M16
INTZ 1V29	29,8 A	19,8 A	115	115	136	100	100	M25	M16
INTZ 1V43	43 A	28,6 A	145	145	158	130	130	M25/32/40	M20
INTZ 1V68	68 A	45,3 A	167	220	144	151	203	M25/32/40	M20
2 speed									
INTZ 2V15	15,4 A	10,2 A	90,5	90,5	139	80	80	M20	M12
INTZ 2V22	22,4 A	14,9 A	115	115	163	100	100	M25	M16
INTZ 2V29	29,8 A	19,8 A	115	115	163	100	100	M25	M16
INTZ 2V43	43 A	28,6 A	145	145	188	130	130	M25/32/40	M20
INTZ 2V68	68 A	45,3 A	216	267	170	190	242	M40/50	M20

* Mounting dimensions.

** Accordance with the regulations: smoke extract size = size confort/1.5.



LxWxH (mm): 85 x 90 x 120

THREE PHASE FAN Y/Δ SWITCH (COM D/S)

Three phase fan Y/Δ switch. Rotary switch with three positions, OFF, Y and Δ. Maximum absorbed current: 20A. IP67 protection.

Supply voltage	Voltage of motor
380-400 V	III / 380 / 50
	III / 400 / 50
220-230 V	III / 220-380 / 50
	III / 230-400 / 50



T1-T2

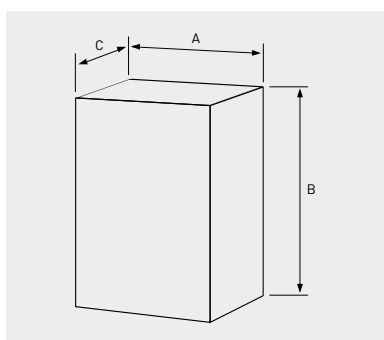


T3-T4

ADJUSTABLE FREQUENCY DRIVE (VFTM 32)

For three phase motors, including PM motors, from 0.37 to 15 kW. Voltage supplies: single phase 230V. 50/60Hz (VFTM32 MONO), three phase 400V 50/60Hz (VFTM32 TRI). External display of parameters (current, power, torque, speed, frequency...).

Model	Power motor (kW)	Maximum power (A)	Powerdissipated (W)	Size reference	Weight (kg)
Single phase supply 230V-50/60Hz, three phase output 230V					
VFTM32 MONO 0,18	0,18	1,5	25	T1	2,4
VFTM32 MONO 0,37	0,37	3,3	38	T1	2,4
VFTM32 MONO 0,55	0,55	3,7	42	T1	2,4
VFTM32 MONO 0,75	0,75	4,8	51	T1	2,4
VFTM32 MONO 1,1	1,1	6,9	64	T2	2,9
VFTM32 MONO 1,5	1,5	8	81	T2	2,9
VFTM32 MONO 2,2	2,2	11	102	T2	2,9
Three phase supply 400V-50/60Hz, three phase output 400V					
VFTM32 TRI 0,37	0,37	1,5	27	T1	2,5
VFTM32 TRI 0,55	0,55	1,9	31	T1	2,5
VFTM32 TRI 0,75	0,75	2,3	37	T1	2,5
VFTM32 TRI 1,1	1,1	3	50	T1	2,5
VFTM32 TRI 1,5	1,5	4,1	63	T1	2,5
VFTM32 TRI 2,2	2,2	5,5	78	T2	3,0
VFTM32 TRI 3	3	7,1	100	T2	3,0
VFTM32 TRI 4	4	9,5	125	T2	3,0
VFTM32 TRI 5,5	5,5	14,3	233	T3	7,5
VFTM32 TRI 7,5	7,5	17	263	T3	7,5
VFTM32 TRI 11	11	27,7	403	T4	8,7
VFTM32 TRI 15	15	33	480	T4	8,8



Dimensions	A	B	C
T1	45	317	245
T2	60	317	245
T3	150	232	232
T4	180	330	232



TDP-S / TDP-D

TDP-S

Pressure sensor. Enables you to control the pressure in the fan inlet.

TDP-D

Pressure sensor, with display. Enables you to control the pressure in the fan inlet.

Model	Electrical supply	Maximum power (VA)	Ø Connector (mm)	Voltage	IP Protection	Pressure range	Dimensions LxWxH (mm)
TDP-S	24VAC-24VDC	4	6,2	0-10 V / 4-20 mA	IP54	0-2500 Pa	75x36x80
TDP-D							

MEASURING DEVICE TO GET AIR VOLUME DATA

The definition of the volume flow follows through the measurement of the differential pressure in the fan inlet. There are 4 pressure probes positioned in each inlet cone, the pressure probes are connected with a PVC tube. Each size of fan was measured and the calibration curves determined. Based on the curves measured the following calibration factors (k-factor) can be used:

Fan-type	k-factor	Fan-type	k-factor
BPH 225	50	BPH 500	254
BPH 250	64	BPH 560	330
BPH 280	79	BPH 630	410
BPH 315	100	BPH 710	526
BPH 355	128	BPH 800	667
BPH 400	158	BPH 900	855
BPH 450	209	BPH 1000	1068

The calculation of the volume flow is made according to the following formula:

$$V = k * \sqrt{\Delta\rho} \text{ [m}^3\text{/h]}$$

This relation applies for the density $\rho = 1,205 \text{ [Kg/m}^3\text{]}$.

At density deviating from $1,205 \text{ [Kg/m}^3\text{]}$ the following correction can be made:

$$V\rho = V1,205 * \sqrt{1,205 / \rho}$$

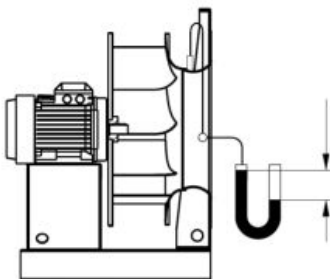
Where:

V = volume flow at $\rho = 1,205 \text{ Kg/m}^3 \text{ [m}^3\text{/h]}$

$V\rho$ = volume flow at density $\rho \text{ [m}^3\text{/h]}$

ρ = density $\neq 1,205 \text{ Kg/m}^3$

$\Delta\rho$ = differential pressure at the fan inlet (difference between fan inlet and suction chamber) $[\text{Pa}]$



The flow rate of the fan in operational conditions may be simply read on the calibration chart for the relevant fan size, plotting on the chart the pressure value read by the probe.

Example:

Consider to use an BPFM 280, rotating at 3550 rpm, with a total pressure of 1000 Pa. The flow rate is about $3.000 \text{ m}^3\text{/h}$.

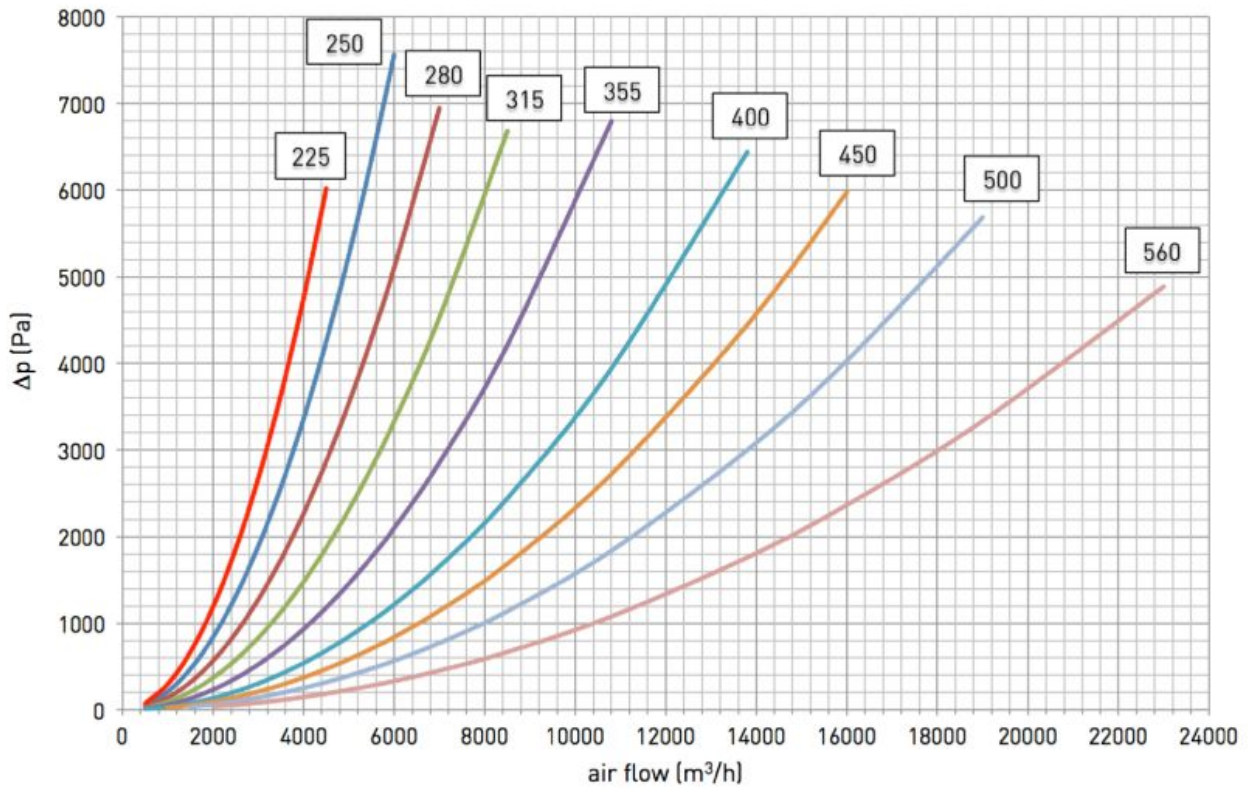
From the manometer connected to the pressure probe system you will read 1275 Pa.

When entering this pressure on the calibration chart pressure axis, at the intersection with the BPFM 280 calibration curve, a value of $3000 \text{ m}^3\text{/h}$ will be read on the flow rate axis. If the same fan is running at a different speed but with the same flow rate, the pressure probe system will again read $\rho = 1275 \text{ Pa}$.

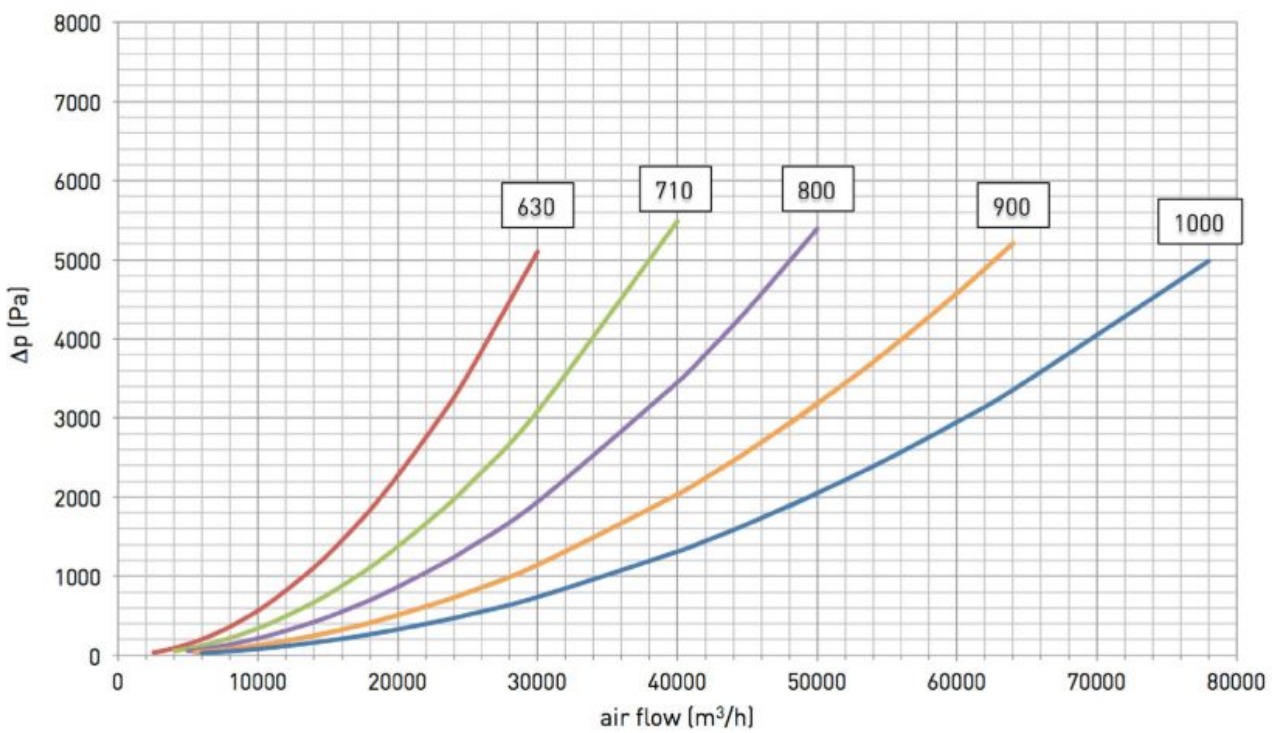


Calibration charts

BPFM 225 TO 560

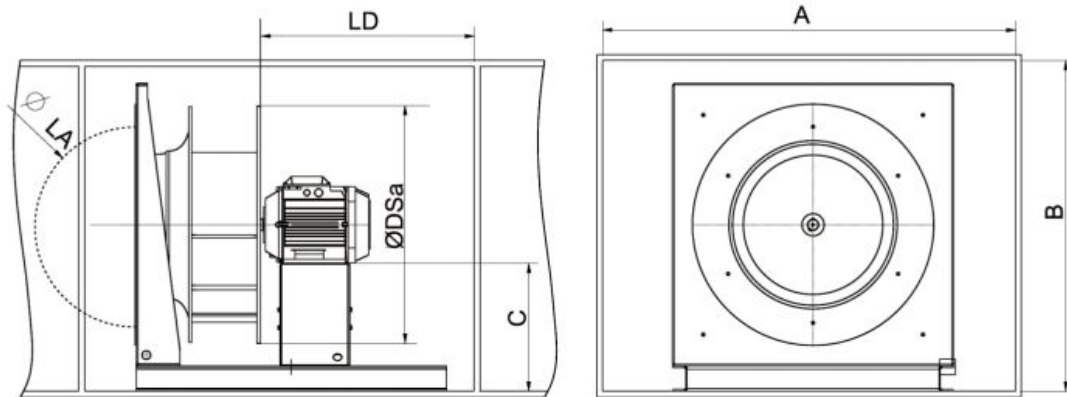


BPFM 630 TO 1000





Installation instruction



Optimum distances from the wheel to other components:

Distance at the inlet side
 $LA \geq 0,5 \times DSa^*$

Distance at the outlet side
 $LD \geq 1 \times DSa$

Housing wall distances
 $A \geq 1,8 \times DSa$
 $A = B$

In box section with unequal side lengths, a reference surface F (equivalent parameter) consisting of side-width A and side-high B can be calculated as an iteration when there is a minimum clearance of $0,3 \times DSa$ between the impeller and the wall. $F = \sqrt{A \times B}$

In the case of disturbance flow
 (for example curved pipe at the inlet, flaps etc)
 $LA \geq 1 \times DSa$

Nominal wheel size	Real wheel size (ØDSa)
225	256
250	284
280	319
315	360
355	404
400	455
450	505
500	566
560	636
630	716
710	806
800	909
900	1010
1000	1140

ErP data



Fan type	Installation category	Efficiency category	VSD must be installed with the fan	Specific ratio*	Wheel size	BEP (best efficiency point) data			Fan efficiency [%]	Abs. Power (kW) (Pe(KW))	Overall Eff ErP 2015	Efficiency grade N	Eff Grade ErP 2015
						Air volume [m³/h]	Static pressure [Pa]	Speed [RPM]					
BPHM-225-2T-00 0,37 kW	A	Static	Yes	1	225x63	1500	620	3415	54,07	0,49	48,2	67,8	62,0
BPHM-225-2T-00 0,55 kW	A	Static	Yes	1	225x63	1750	800	3924	58,70	0,68	49,7	71,0	62,0
BPHM-225-2T-00 0,75 kW	A	Static	Yes	1	225x63	1900	1000	4332	61,43	0,88	50,9	72,5	62,0
BPHM-225-2T-00 1,1 kW	A	Static	Yes	1	225x63	2200	1270	4940	62,33	1,27	52,6	71,7	62,0
BPHM-225-2T-02 1,5 kW	A	Static	Yes	1	225x63	2400	1600	5477	63,31	1,72	54,0	71,3	62,0
BPHM-225-PM-02 0,75 kW	A	Static	Yes	1	225x63	1900	1000	4332	69,45	0,77	50,3	81,1	62,0
BPHM-225-PM-03 1,1 kW	A	Static	Yes	1	225x63	2200	1270	4940	68,91	1,15	52,1	78,8	62,0
BPHM-250-2T-00 0,37 kW	A	Static	Yes	1	250x71	1700	560	2879	55,34	0,49	48,2	69,1	62,0
BPHM-250-2T-01 0,55 kW	A	Static	Yes	1	250x71	1900	740	3278	58,95	0,68	49,7	71,2	62,0
BPHM-250-2T-02 0,75 kW	A	Static	Yes	1	250x71	2200	880	3652	62,59	0,88	50,9	73,7	62,0
BPHM-250-2T-03 1,1 kW	A	Static	Yes	1	250x71	2400	1175	4134	62,91	1,27	52,6	72,3	62,0
BPHM-250-2T-04 1,5 kW	A	Static	Yes	1	250x71	2700	1430	4591	63,66	1,72	54,0	71,7	62,0
BPHM-250-2T-05 2,2 kW	A	Static	Yes	1	250x71	3100	1820	5211	63,94	2,50	55,7	70,3	62,0
BPHM-250-PM-02 0,75 kW	A	Static	Yes	1	250x71	2200	880	3652	70,77	0,77	50,3	82,4	62,0
BPHM-250-PM-04 1,5 kW	A	Static	Yes	1	250x71	2700	1430	4591	70,00	1,56	53,5	78,5	62,0
BPHM-280-2T-01 0,55 kW	A	Static	Yes	1	280x80	2250	630	2723	59,44	0,68	49,7	71,7	62,0
BPHM-280-2T-02 0,75 kW	A	Static	Yes	1	280x80	2550	760	3041	62,66	0,88	50,9	73,8	62,0
BPHM-280-2T-03 1,1 kW	A	Static	Yes	1	280x80	2900	970	3445	62,75	1,27	52,6	72,2	62,0
BPHM-280-2T-04 1,5 kW	A	Static	Yes	1	280x80	3200	1220	3838	64,37	1,72	54,0	72,4	62,0
BPHM-280-2T-05 2,2 kW	A	Static	Yes	1	280x80	3600	1580	4350	64,46	2,50	55,7	70,8	62,0
BPHM-280-2T-06 3 kW	A	Static	Yes	1	280x80	4000	1960	4841	65,50	3,39	57,1	70,4	62,0
BPHM-280-PM-02 0,75 kW	A	Static	Yes	1	280x80	2550	760	3041	70,84	0,77	50,3	82,5	62,0
BPHM-280-PM-05 2,2 kW	A	Static	Yes	1	280x80	3600	1580	4350	70,17	2,30	55,3	76,9	62,0
BPHM-315-2T-03 1,1 kW	A	Static	Yes	1	315x90	3400	850	2854	64,47	1,27	52,6	73,9	62,0
BPHM-315-2T-04 1,5 kW	A	Static	Yes	1	315x90	3800	1040	3171	65,16	1,72	54,0	73,2	62,0
BPHM-315-2T-05 2,2 kW	A	Static	Yes	1	315x90	4200	1380	3596	65,68	2,50	55,7	72,0	62,0
BPHM-315-2T-06 3 kW	A	Static	Yes	1	315x90	4700	1680	3987	65,97	3,39	57,1	70,9	62,0
BPHM-315-2T-07 4 kW	A	Static	Yes	1	315x90	5280	2000	4401	66,43	4,50	58,4	70,1	62,0
BPHM-315-PM-03 1,1 kW	A	Static	Yes	1	315x90	3400	850	2854	71,99	1,14	52,1	81,9	62,0
BPHM-315-PM-05 2,2 kW	A	Static	Yes	1	315x90	4200	1380	3596	71,50	2,30	55,3	78,2	62,0
BPHM-315-PM-06 3 kW	A	Static	Yes	1	315x90	4700	1680	3987	70,89	3,15	56,7	76,1	62,0
BPHM-355-4T-03 1,1 kW	A	Static	Yes	1	355x100	4150	700	2377	64,80	1,27	52,6	74,2	62,0
BPHM-355-4T-04 1,5 kW	A	Static	Yes	1	355x100	4400	900	2631	65,29	1,72	54,0	73,3	62,0
BPHM-355-2T-05 2,2 kW	A	Static	Yes	1	355x100	5100	1150	2997	66,46	2,50	55,7	72,8	62,0
BPHM-355-2T-06 3 kW	A	Static	Yes	1	355x100	5700	1400	3321	66,67	3,39	57,1	71,6	62,0
BPHM-355-2T-07 4 kW	A	Static	Yes	1	355x100	6250	1700	3653	66,84	4,50	58,4	70,5	62,0
BPHM-355-PM-03 1,1 kW	A	Static	Yes	1	355x100	4150	700	2377	72,04	1,14	52,1	81,9	62,0
BPHM-355-PM-05 2,2 kW	A	Static	Yes	1	355x100	5100	1150	2997	72,04	2,31	55,3	78,7	62,0
BPHM-355-PM-07 4 kW	A	Static	Yes	1	355x100	6250	1700	3653	71,65	4,20	58,0	75,6	62,0
BPHM-400-4T-03 1,1 kW	A	Static	Yes	1	400x112	4800	610	1953	65,31	1,27	52,6	74,7	62,0
BPHM-400-4T-04 1,5 kW	A	Static	Yes	1	400x112	5200	770	2167	66,01	1,72	54,0	74,0	62,0
BPHM-400-4T-05 2,2 kW	A	Static	Yes	1	400x112	6200	950	2437	66,75	2,50	55,7	73,1	62,0
BPHM-400-4T-06 3 kW	A	Static	Yes	1	400x112	6650	1200	2726	66,67	3,39	57,1	71,6	62,0
BPHM-400-2T-07 4 kW	A	Static	Yes	1	400x112	7400	1450	3011	67,50	4,50	58,4	71,1	62,0
BPHM-400-2T-08 5,5 kW	A	Static	Yes	1	400x112	8200	1790	3341	67,58	6,15	59,8	69,8	62,0



Fan type	Installation category	Efficiency category	VSD must be installed with the fan	Specific ratio*	Wheel size	BEP (best efficiency point) data			Fan efficiency [%]	Abs. Power (kW) (Pe(KW))	Overall Eff ErP 2015	Efficiency grade N	Eff Grade ErP 2015
						Air volume [m³/h]	Static pressure [Pa]	Speed [RPM]					
BPHM-710-6T-06 3 kW	A	Static	Yes	1	710x200	14000	580	1046	67,84	3,39	57,1	72,8	62,0
BPHM-710-6T-07 4 kW	A	Static	Yes	1	710x200	15500	700	1152	68,26	4,50	58,4	71,9	62,0
BPHM-710-6T-08 5,5 kW	A	Static	Yes	1	710x200	17000	880	1281	68,88	6,15	59,8	71,1	62,0
BPHM-710-4T-09 7,5 kW	A	Static	Yes	1	710x200	18500	1100	1420	69,49	8,29	61,1	70,3	62,0
BPHM-710-4T-10 11 kW	A	Static	Yes	1	710x200	21000	1420	1613	70,32	12,01	62,1	70,2	62,0
BPHM-710-4T-11 15 kW	A	Static	Yes	1	710x200	23000	1760	1787	70,66	16,22	62,5	70,2	62,0
BPHM-710-4T-12 18,5 kW	A	Static	Yes	1	710x200	25200	1990	1917	71,40	19,89	62,7	70,7	62,0
BPHM-710-PM-06 3 kW	A	Static	Yes	1	710x200	14000	580	1046	72,98	3,15	56,7	78,2	62,0
BPHM-710-PM-08 5,5 kW	A	Static	Yes	1	710x200	17000	880	1281	72,68	5,83	59,5	75,1	62,0
BPHM-710-PM-09 7,5 kW	A	Static	Yes	1	710x200	18500	1100	1420	72,98	7,90	60,9	74,1	62,0
BPHM-710-PM-10 11 kW	A	Static	Yes	1	710x200	21000	1420	1613	73,62	11,47	62,1	73,5	62,0
BPHM-710-PM-11 15 kW	A	Static	Yes	1	710x200	23000	1760	1787	73,44	15,61	62,4	73,0	62,0
BPHM-800-6T-07 4 kW	A	Static	Yes	1	800x224	19000	560	951	66,93	4,50	58,4	70,6	62,0
BPHM-800-6T-08 5,5 kW	A	Static	Yes	1	800x224	21000	700	1058	67,69	6,15	59,8	69,9	62,0
BPHM-800-6T-09 7,5 kW	A	Static	Yes	1	800x224	23000	880	1176	69,12	8,29	61,1	70,0	62,0
BPHM-800-6T-10 11 kW	A	Static	Yes	1	800x224	26000	1140	1335	69,90	12,01	62,1	69,8	62,0
BPHM-800-4T-11 15 kW	A	Static	Yes	1	800x224	28900	1400	1480	70,63	16,22	62,5	70,2	62,0
BPHM-800-4T-12 18,5 kW	A	Static	Yes	1	800x224	31500	1580	1589	70,86	19,89	62,7	70,2	62,0
BPHM-800-4T-13 22 kW	A	Static	Yes	1	800x224	34000	1740	1687	71,15	23,54	62,9	70,3	62,0
BPHM-800-PM-08 5,5 kW	A	Static	Yes	1	800x224	21000	700	1058	71,42	5,83	59,5	73,9	62,0
BPHM-800-PM-10 11 kW	A	Static	Yes	1	800x224	26000	1140	1335	73,02	11,49	62,1	72,9	62,0
BPHM-800-PM-11 15 kW	A	Static	Yes	1	800x224	28900	1400	1480	73,56	15,57	62,4	73,1	62,0
BPHM-900-8T-07 4 kW	A	Static	Yes	1	900x250	22000	485	781	67,12	4,50	58,4	70,8	62,0
BPHM-900-8T-08 5,5 kW	A	Static	Yes	1	900x250	24500	600	869	67,69	6,15	59,8	69,9	62,0
BPHM-900-6T-09 7,5 kW	A	Static	Yes	1	900x250	27500	738	969	69,31	8,29	61,1	70,2	62,0
BPHM-900-6T-10 11 kW	A	Static	Yes	1	900x250	31500	930	1097	69,08	12,01	62,1	68,9	62,0
BPHM-900-6T-11 15 kW	A	Static	Yes	1	900x250	35000	1150	1219	70,26	16,22	62,5	69,8	62,0
BPHM-900-6T-12 18,5 kW	A	Static	Yes	1	900x250	37500	1330	1309	71,01	19,89	62,7	70,3	62,0
BPHM-900-6T-13 22 kW	A	Static	Yes	1	900x250	40000	1485	1389	71,44	23,54	62,9	70,6	62,0
BPHM-900-4T-14 30 kW	A	Static	Yes	1	900x250	43000	1885	1535	72,03	31,86	63,2	70,8	62,0
BPHM-900-PM-10 11 kW	A	Static	Yes	1	900x250	31500	930	1097	72,17	11,49	62,1	72,1	62,0
BPHM-900-PM-11 15 kW	A	Static	Yes	1	900x250	35000	1150	1219	73,18	15,57	62,4	72,8	62,0
BPHM-1000-8T-08 5,5 kW	A	Static	Yes	1	1000x280	28500	520	732	68,24	6,15	59,8	70,5	62,0
BPHM-1000-8T-09 7,5 kW	A	Static	Yes	1	1000x280	31500	640	811	68,84	8,29	61,1	69,7	62,0
BPHM-1000-8T-10 11 kW	A	Static	Yes	1	1000x280	37000	800	926	69,80	12,01	62,1	69,7	62,0
BPHM-1000-6T-10 11 kW	A	Static	Yes	1	1000x280	36000	790	912	70,16	11,48	62,1	70,1	62,0
BPHM-1000-6T-11 15 kW	A	Static	Yes	1	1000x280	40000	1010	1023	70,52	16,22	62,5	70,1	62,0
BPHM-1000-6T-12 18,5 kW	A	Static	Yes	1	1000x280	43000	1165	1099	71,32	19,89	62,7	70,6	62,0
BPHM-1000-6T-13 22 kW	A	Static	Yes	1	1000x280	45000	1320	1162	71,44	23,54	62,9	70,6	62,0
BPHM-1000-6T-14 30 kW	A	Static	Yes	1	1000x280	49500	1640	1289	72,14	31,86	63,2	70,9	62,0
BPHM-1000-4T-15 37 kW	A	Static	Yes	1	1000x280	55000	1815	1387	72,27	39,11	63,4	70,8	62,0
BPHM-1000-PM-10 11 kW	A	Static	Yes	1	1000x280	36000	790	912	73,40	10,97	62,0	73,4	62,0
BPHM-1000-PM-12 18,5 kW	A	Static	Yes	1	1000x280	43000	1165	1099	74,16	19,13	62,6	73,5	62,0

Moment of inertia

Type	Wheel Moment of Inertia [J/(kg m ²)]	Wheel Max. Speed (1/min)
BPH 225	0,017	6400
BPH 250	0,024	5800
BPH 280	0,047	5200
BPH 315	0,071	4600
BPH 355	0,14	4100
BPH 400	0,22	3600
BPH 450	0,44	3200
BPH 500	0,68	2900
BPH 560	1,3	2600
BPH 630	2,1	2300
BPH 710	4,5	2100
BPH 800	7,2	1850
BPH 900	14	1600
BPH 1000	21	1400



Llevant, 4
Polígono Industrial Llevant
08150 Parets del Vallès
Barcelona - Spain

Tel. +34 93 571 93 00
Fax +34 93 571 93 01

www.solerpalau.com

*Technical specifications for information purposes only.
Soler & Palau, S.A. reserves the right to change them without any previous notice.*